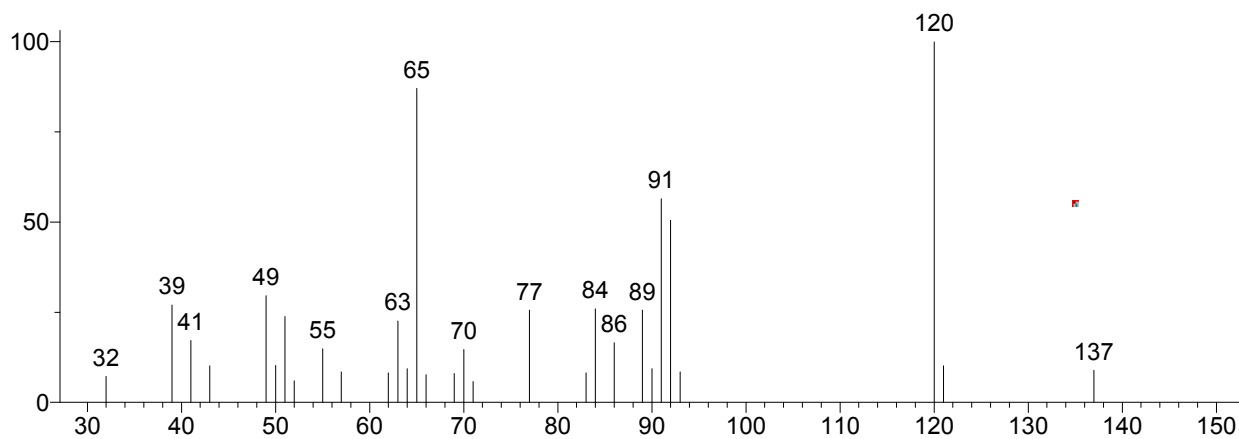
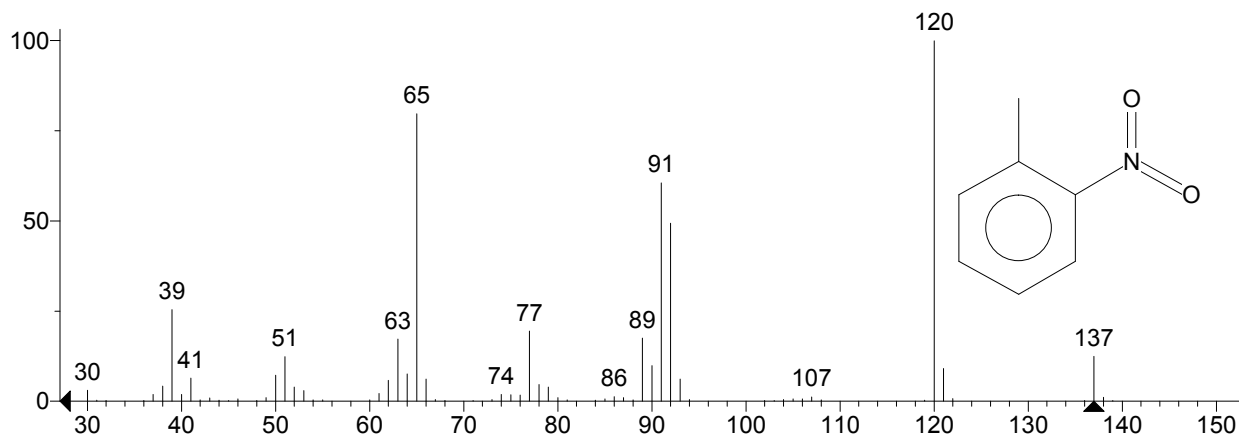


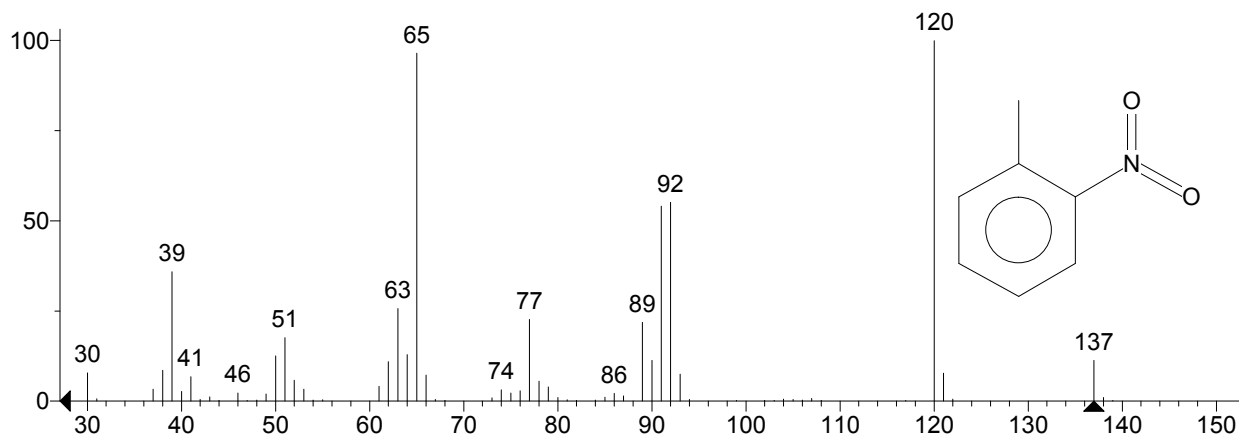
Unknown: Scan 1366 (7.552 min): 01GS078-3+2.D\data.ms
Compound in Library Factor = 101



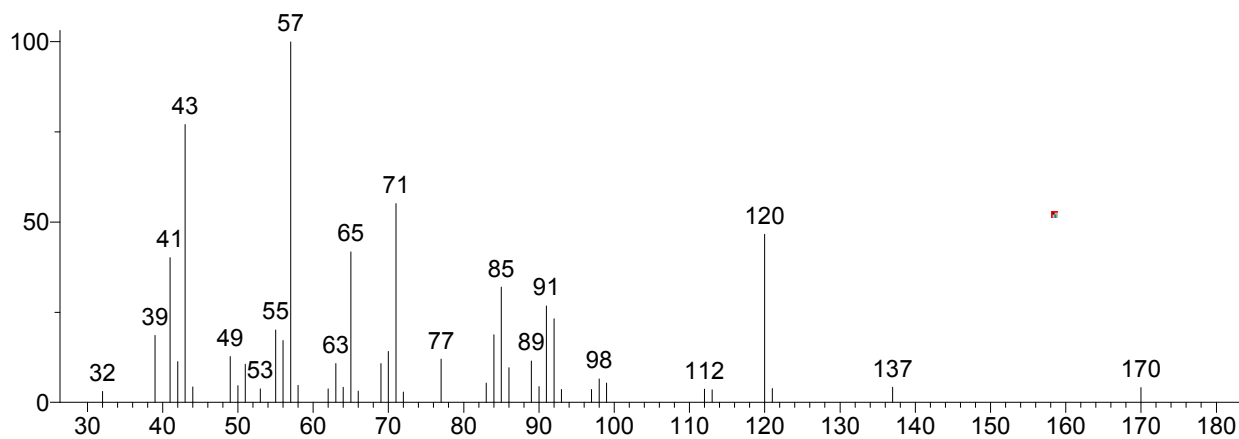
Hit 1 : Benzene, 1-methyl-2-nitro-
C₇H₇NO₂; MF: 822; RMF: 852; Prob 81.9%; CAS: 88-72-2; Lib: replib; ID: 16169.



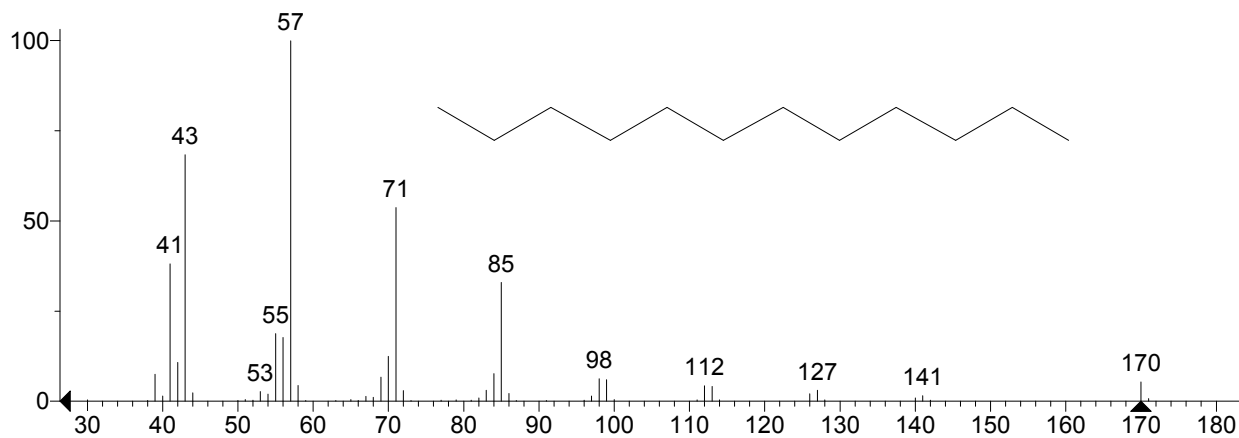
Hit 2 : Benzene, 1-methyl-2-nitro-
C₇H₇NO₂; MF: 813; RMF: 849; Prob 81.9%; CAS: 88-72-2; Lib: mainlib; ID: 67941.



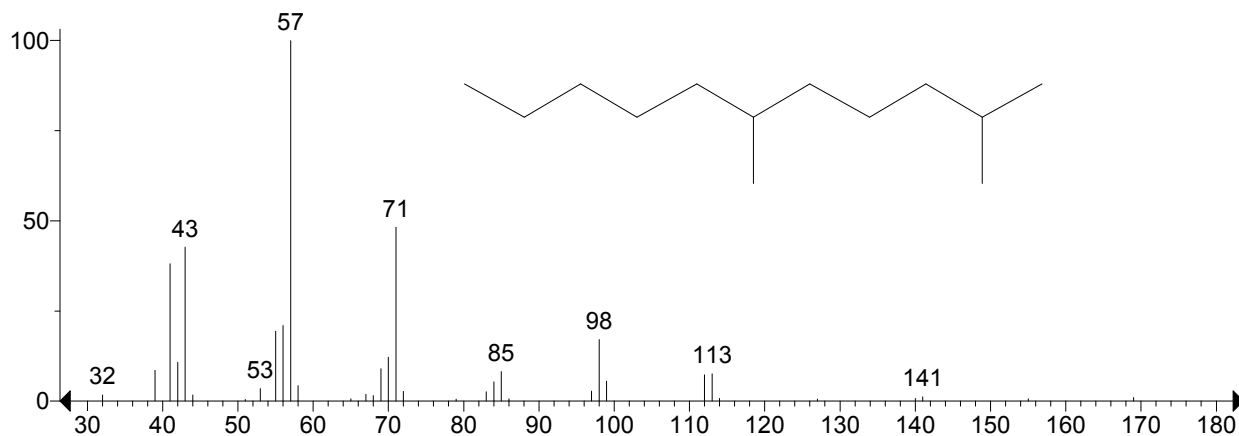
Unknown: Scan 1424 (7.741 min): 01GS078-3+2.D\data.ms
Compound in Library Factor = -1660



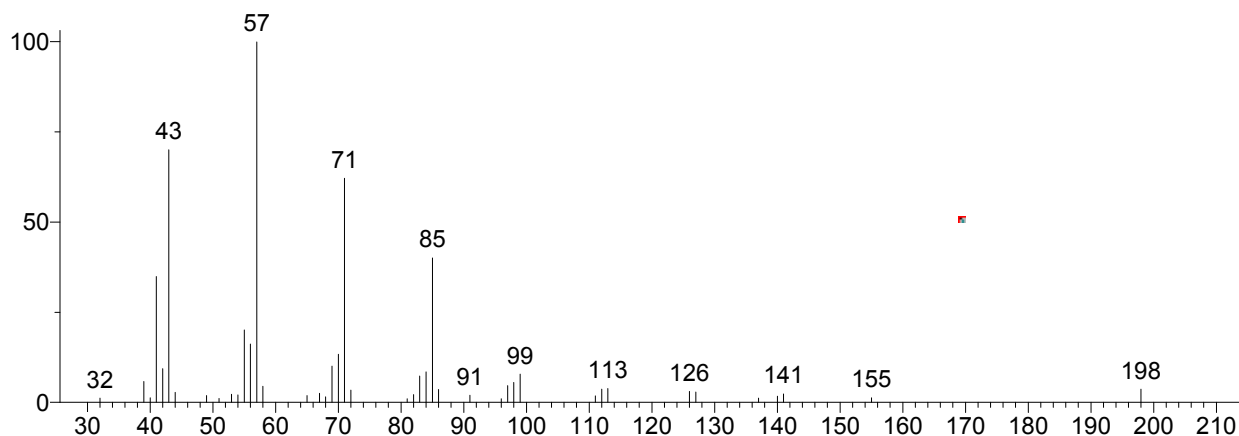
Hit 1 : Dodecane
C₁₂H₂₆; MF: 653; RMF: 770; Prob 6.79%; CAS: 112-40-3; Lib: replib; ID: 5512.



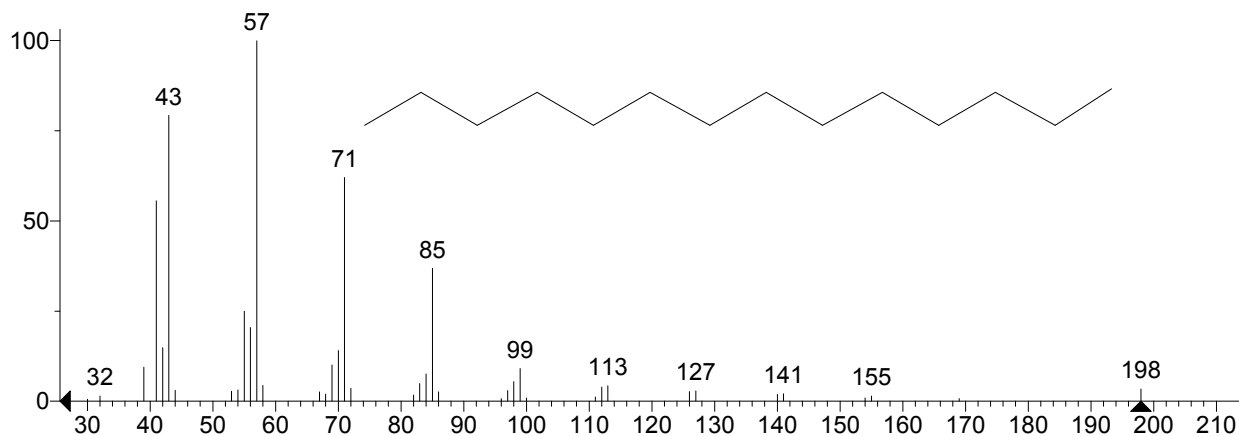
Hit 2 : Undecane, 2,6-dimethyl-
C₁₃H₂₈; MF: 647; RMF: 807; Prob 5.33%; CAS: 17301-23-4; Lib: mainlib; ID: 20697.



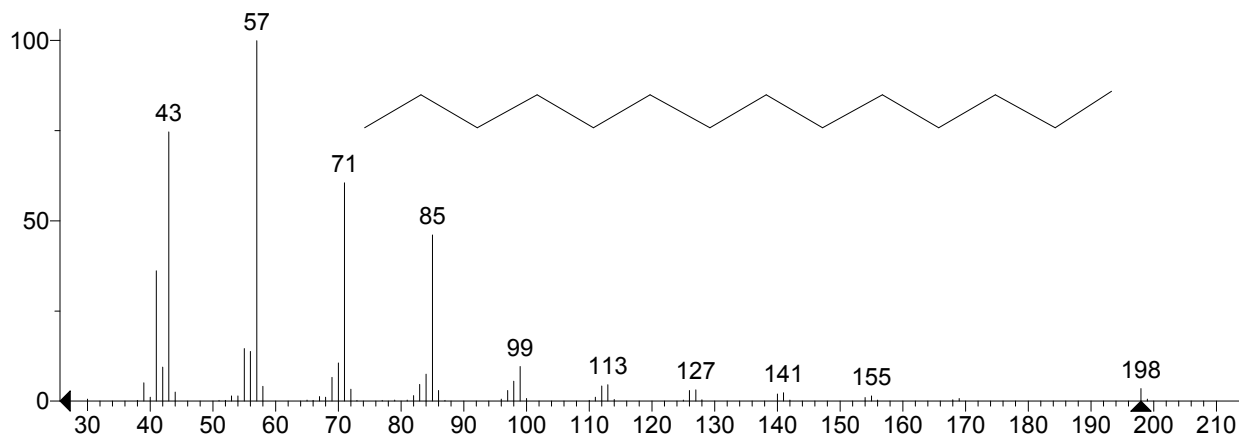
Unknown: Scan 2251 (10.445 min): 01GS078-3+2.D\data.ms
Compound in Library Factor = 138



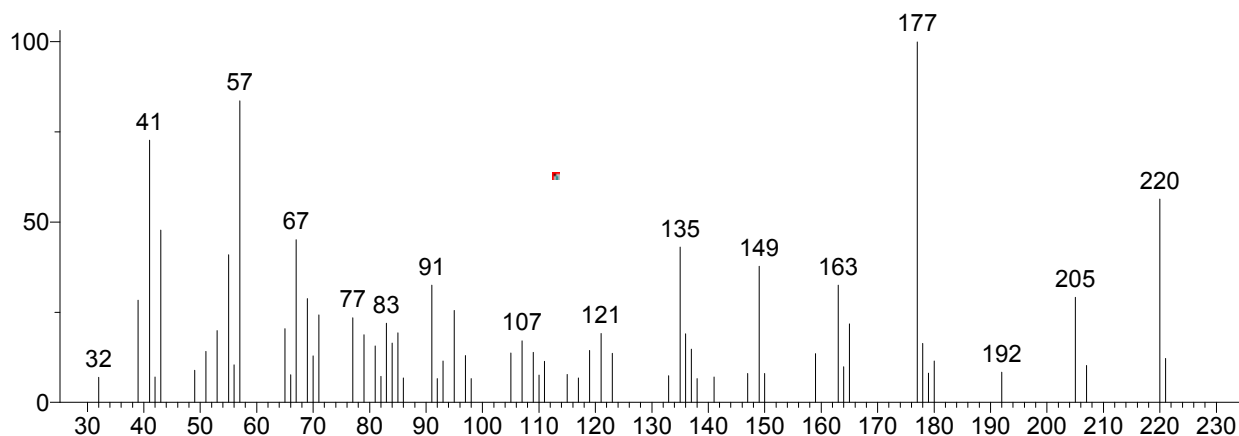
Hit 1 : Tetradecane
C₁₄H₃₀; MF: 939; RMF: 951; Prob 30.6%; CAS: 629-59-4; Lib: replib; ID: 5547.



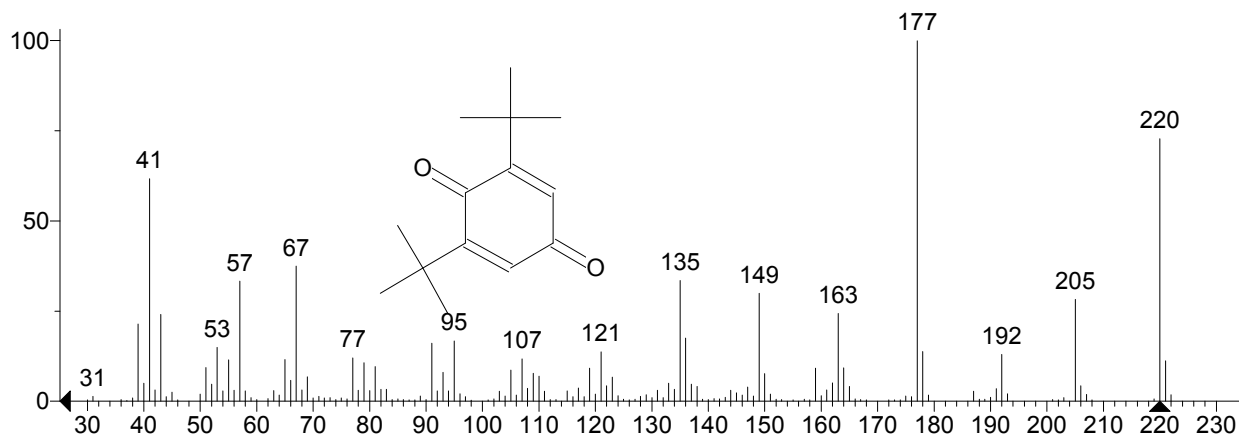
Hit 2 : Tetradecane
C₁₄H₃₀; MF: 910; RMF: 918; Prob 30.6%; CAS: 629-59-4; Lib: replib; ID: 5546.



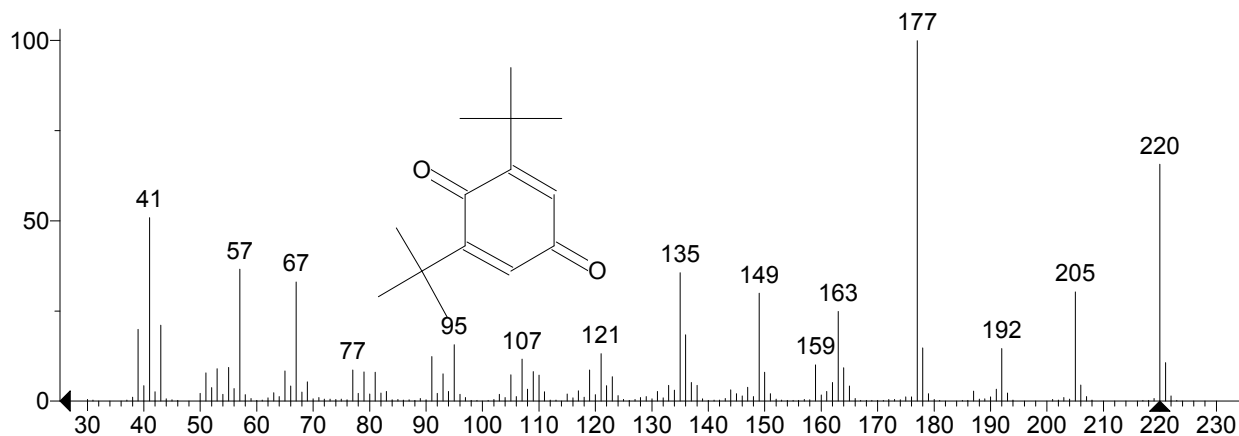
Unknown: Scan 2547 (11.412 min): 01GS078-3+2.D\data.ms
Compound in Library Factor = -343



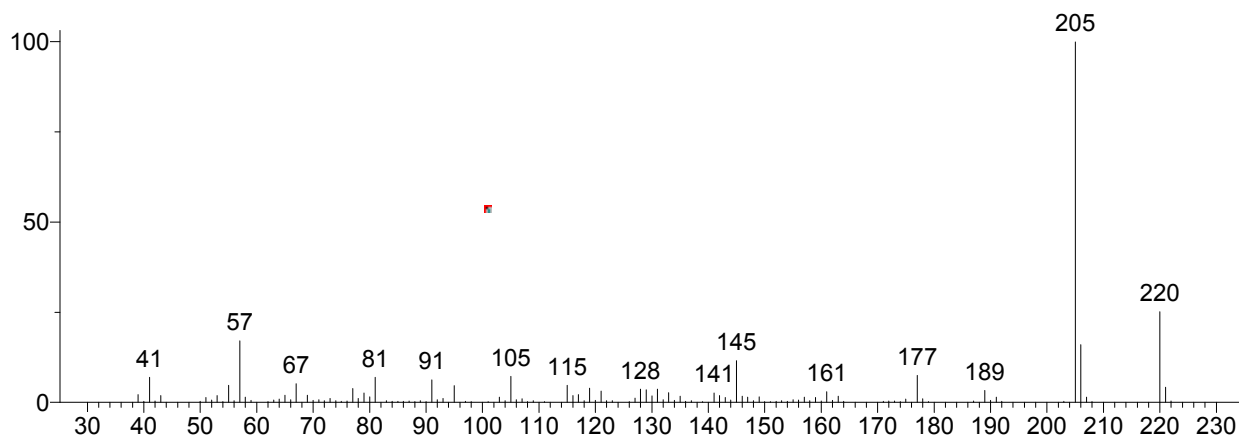
Hit 1 : 2,5-Cyclohexadiene-1,4-dione, 2,6-bis(1,1-dimethylethyl)-
C₁₄H₂₀O₂; MF: 768; RMF: 778; Prob 62.1%; CAS: 719-22-2; Lib: mainlib; ID: 101668.



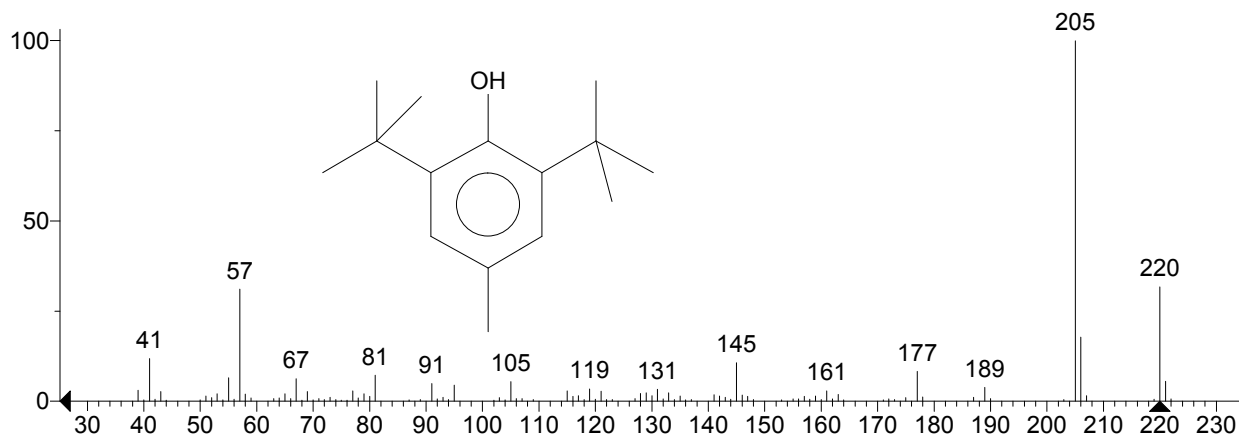
Hit 2 : 2,5-Cyclohexadiene-1,4-dione, 2,6-bis(1,1-dimethylethyl)-
C₁₄H₂₀O₂; MF: 763; RMF: 765; Prob 62.1%; CAS: 719-22-2; Lib: replib; ID: 22385.



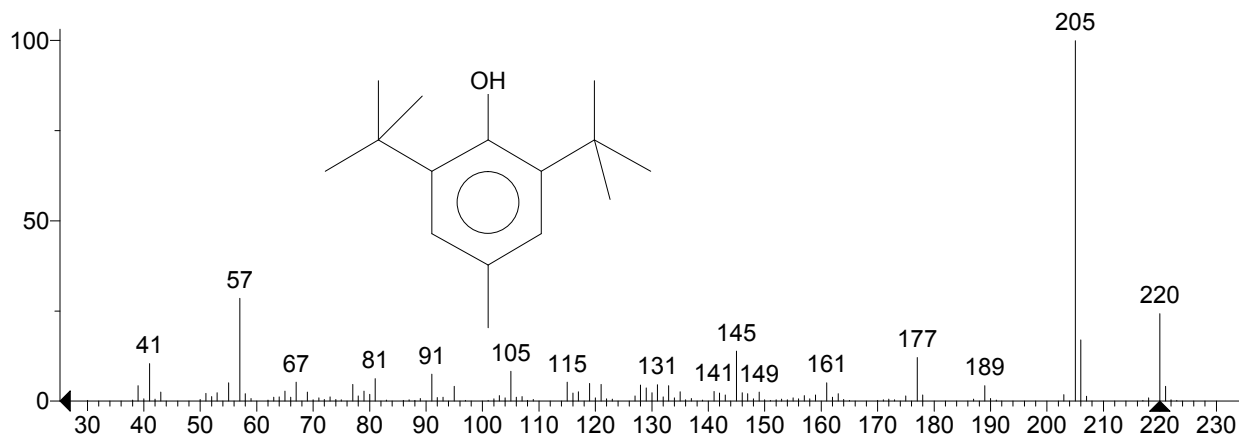
Unknown: Scan 2711 (11.948 min): 01GS078-3+2.D\data.ms
Compound in Library Factor = 138



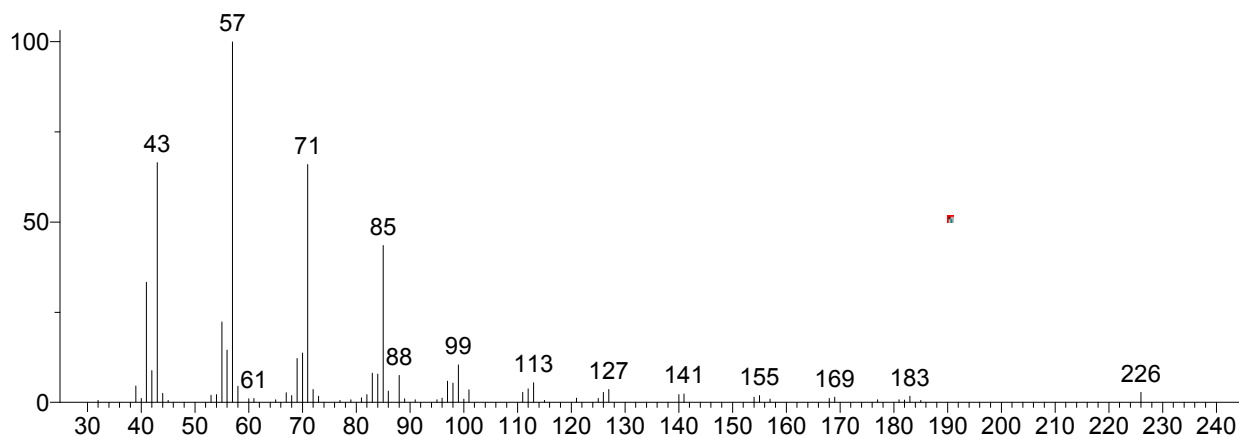
Hit 1 : Butylated Hydroxytoluene
C₁₅H₂₄O; MF: 938; RMF: 945; Prob 74.3%; CAS: 128-37-0; Lib: replib; ID: 24217.



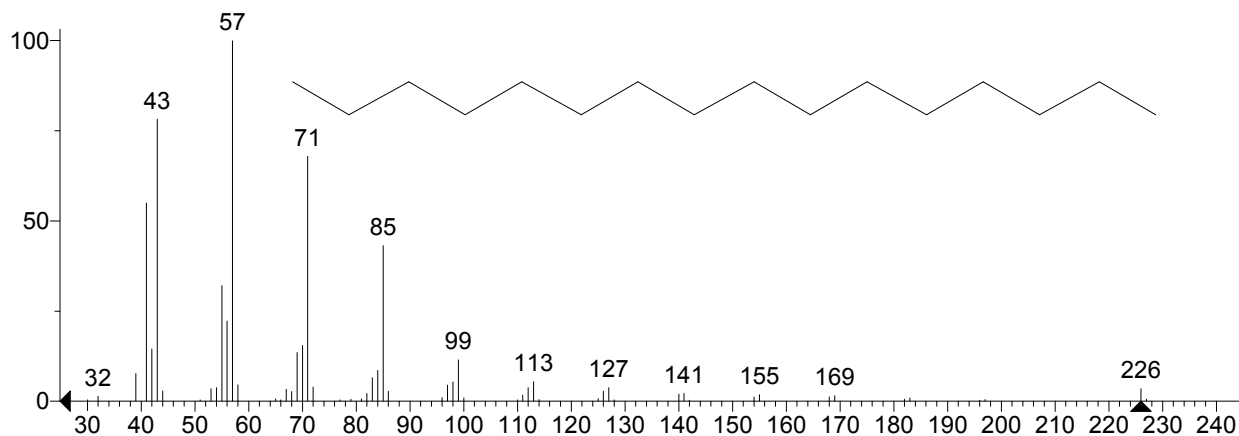
Hit 2 : Butylated Hydroxytoluene
C₁₅H₂₄O; MF: 931; RMF: 934; Prob 74.3%; CAS: 128-37-0; Lib: mainlib; ID: 113172.



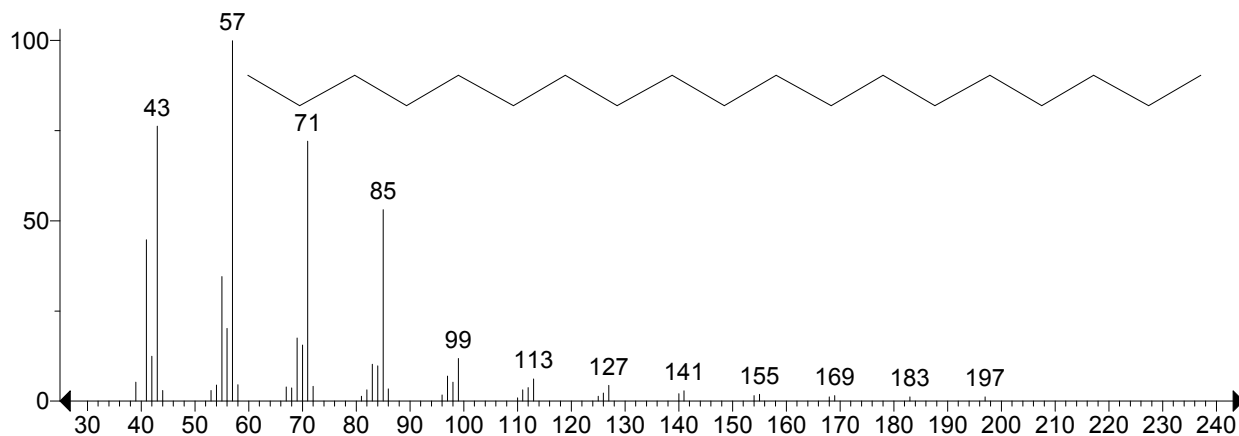
Unknown: Scan 2999 (12.889 min): 01GS078-3+2.D\data.ms
Compound in Library Factor = -113



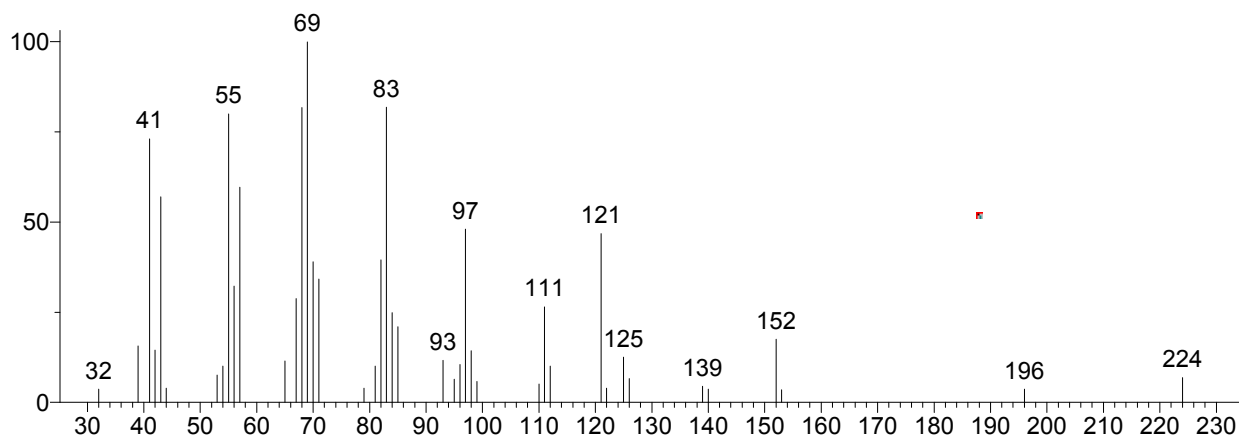
Hit 1 : Hexadecane
C₁₆H₃₄; MF: 914; RMF: 950; Prob 26.4%; CAS: 544-76-3; Lib: replib; ID: 5601.



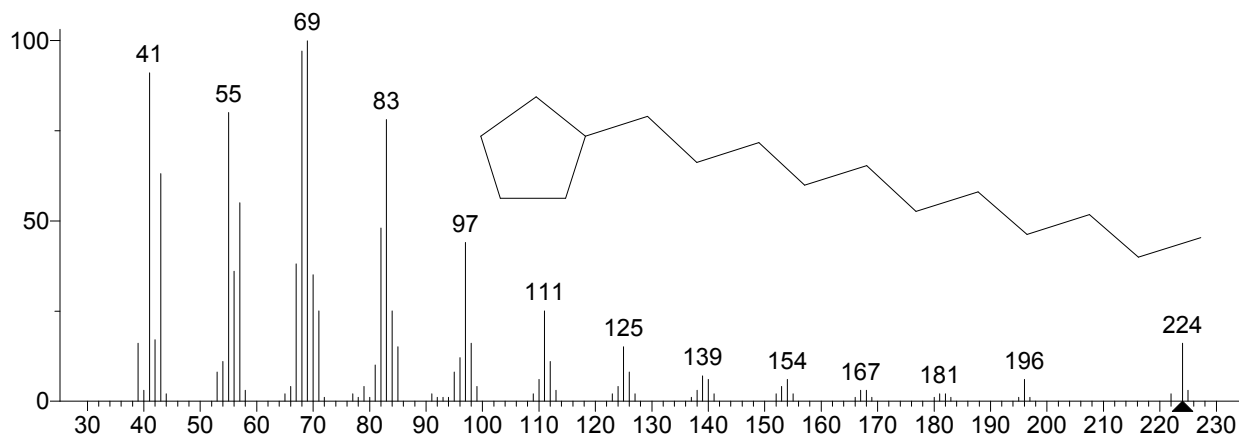
Hit 2 : Nonadecane
C₁₉H₄₀; MF: 897; RMF: 947; Prob 14.4%; CAS: 629-92-5; Lib: replib; ID: 5572.



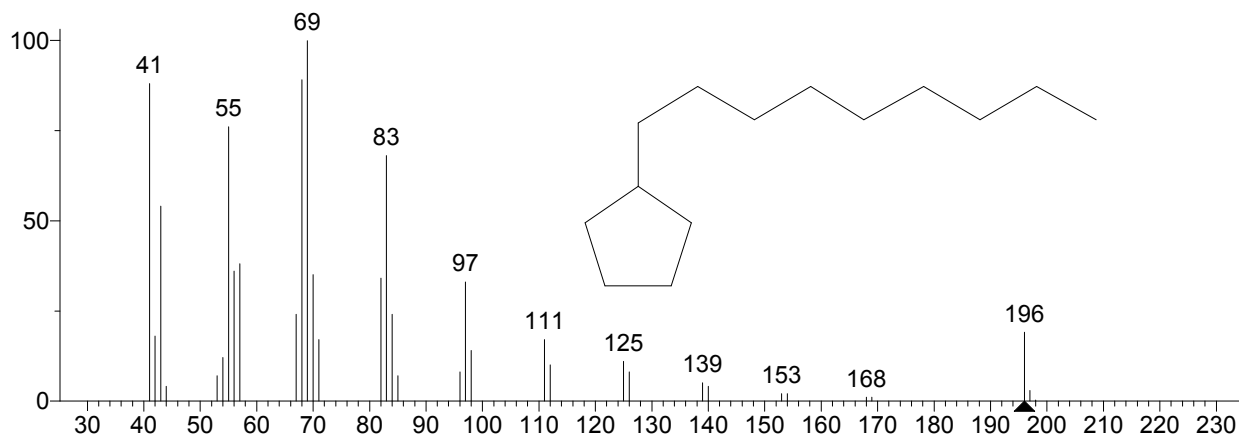
Unknown: Scan 3203 (13.556 min): 01GS078-3+2.D\data.ms
Compound in Library Factor = -503



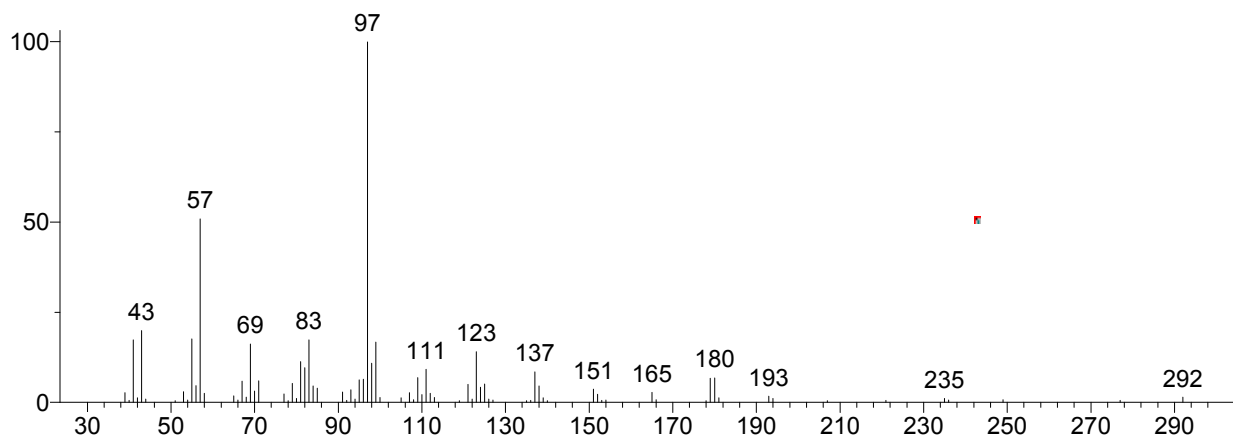
Hit 1 : Cyclopentane, undecyl-
C₁₆H₃₂; MF: 824; RMF: 864; Prob 5.93%; CAS: 6785-23-5; Lib: mainlib; ID: 27567.



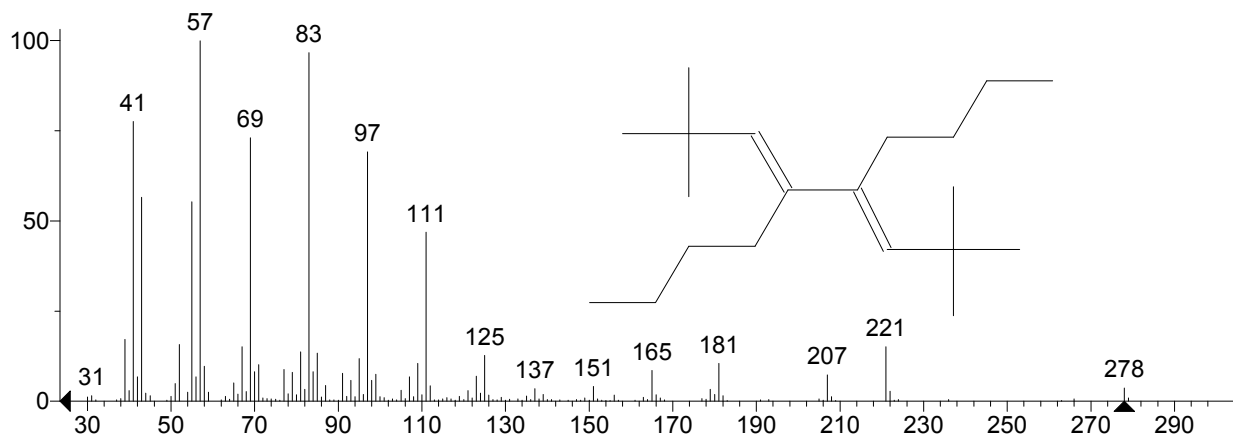
Hit 2 : Cyclopentane, nonyl-
C₁₄H₂₈; MF: 819; RMF: 920; Prob 4.78%; CAS: 2882-98-6; Lib: mainlib; ID: 27564.



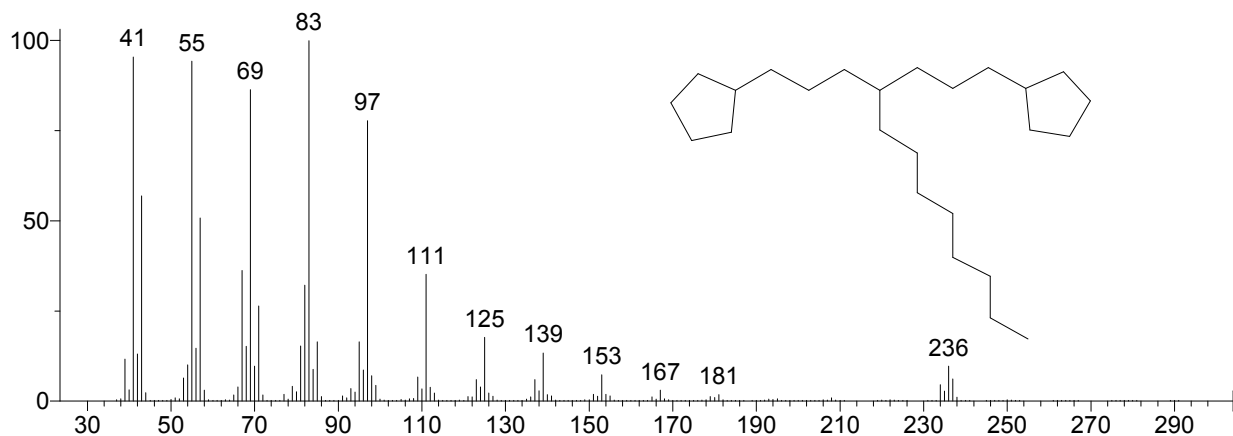
Unknown: Scan 3383 (14.145 min): 01GS078-3+2.D\data.ms
Compound in Library Factor = -1006



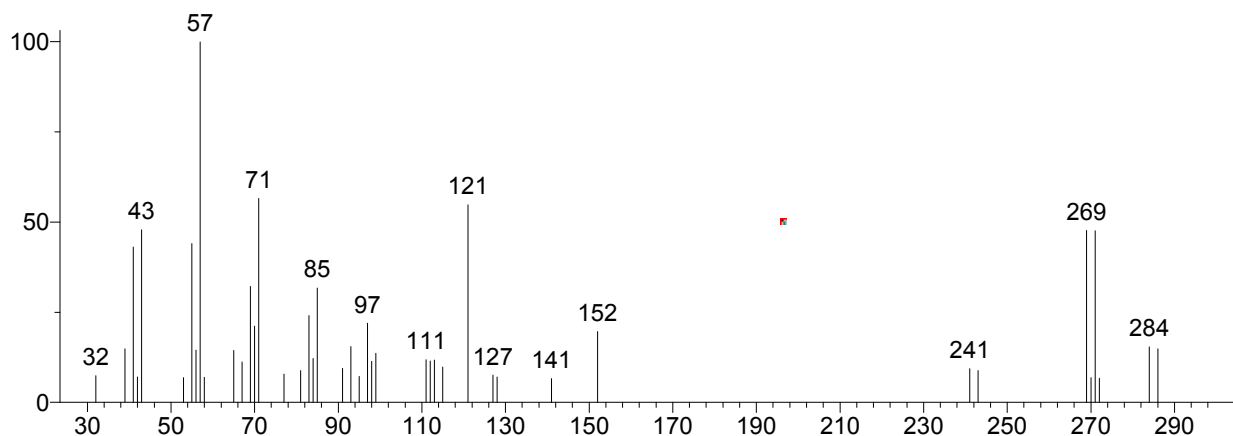
Hit 1 : Decane, 5,6-bis(2,2-dimethylpropylidene)-, (E,Z)-
C₂₀H₃₈; MF: 691; RMF: 703; Prob 6.99%; CAS: 55712-56-6; Lib: mainlib; ID: 20869.



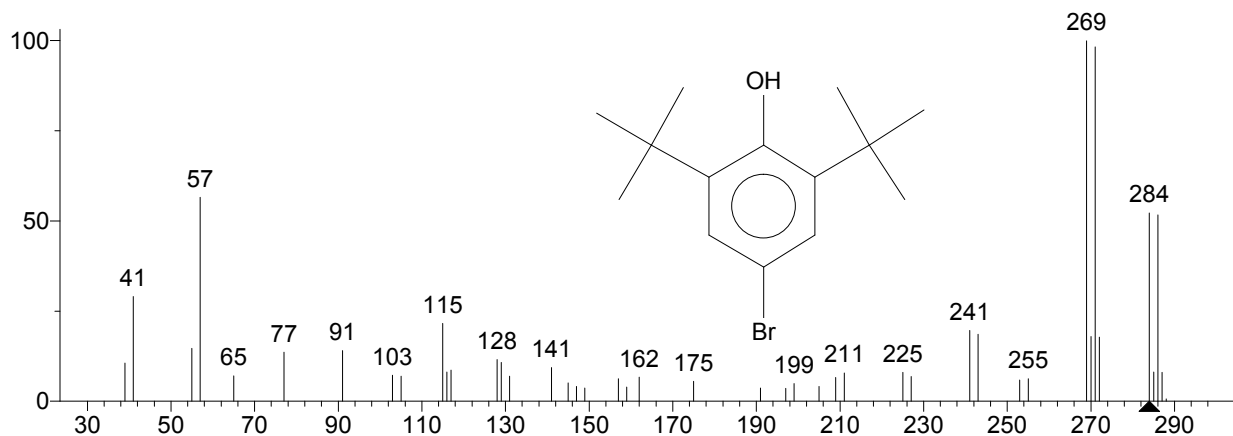
Hit 2 : Dodecane, 1-cyclopentyl-4-(3-cyclopentylpropyl)-
C₂₅H₄₈; MF: 691; RMF: 695; Prob 6.99%; CAS: 7225-68-5; Lib: mainlib; ID: 38996.



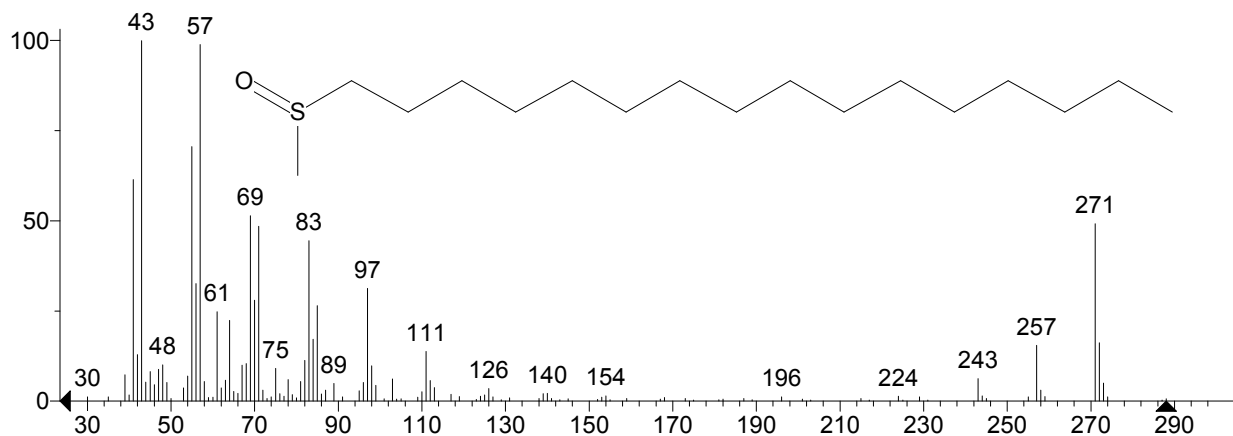
Unknown: Scan 3441 (14.334 min): 01GS078-3+2.D\data.ms
Compound in Library Factor = -1014



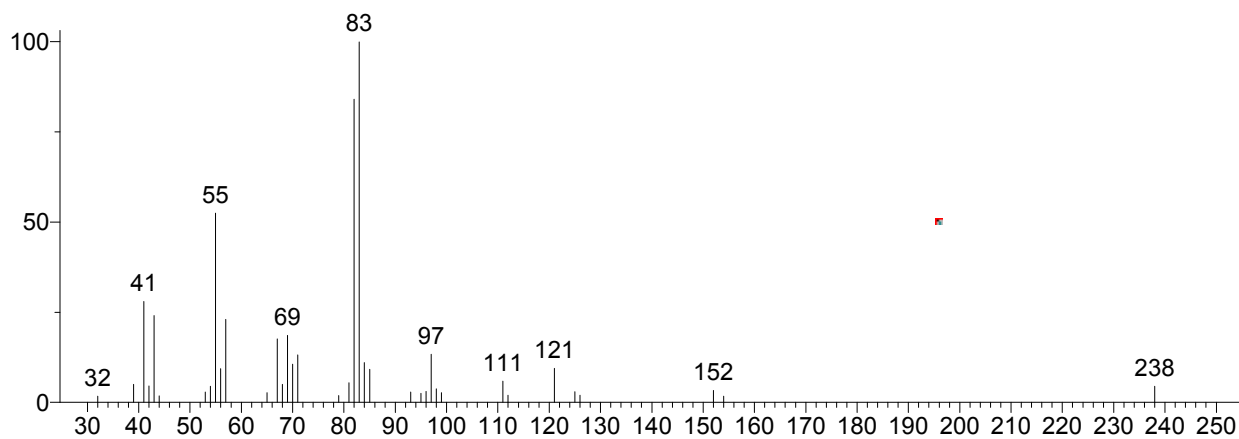
Hit 1 : 4-Bromo-2,6-di-tert-butylphenol
C₁₄H₂₁BrO; MF: 561; RMF: 790; Prob 54.6%; CAS: 1139-52-2; Lib: mainlib; ID: 130654.



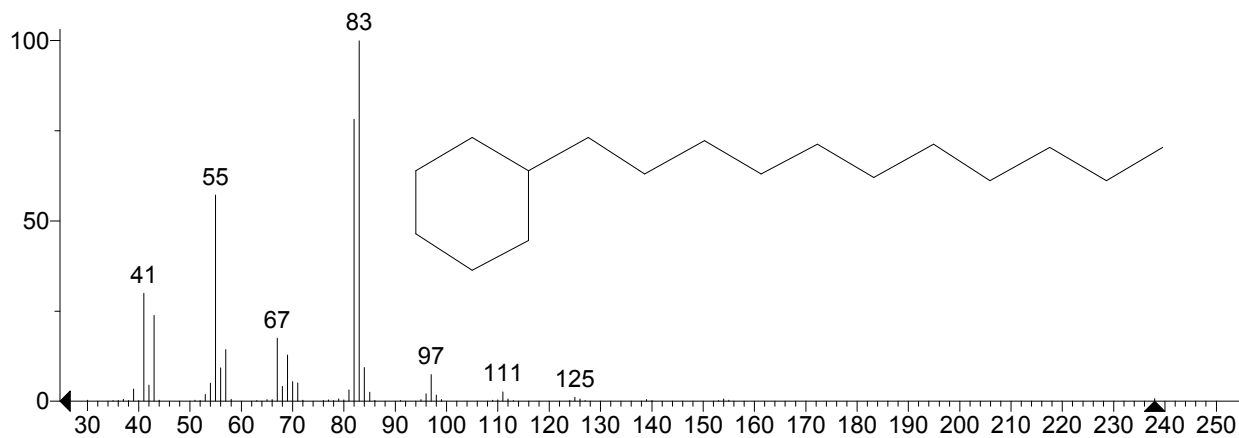
Hit 2 : Sulfoxide, hexadecyl methyl
C₁₇H₃₆OS; MF: 513; RMF: 679; Prob 11.3%; CAS: 3079-32-1; Lib: mainlib; ID: 6709.



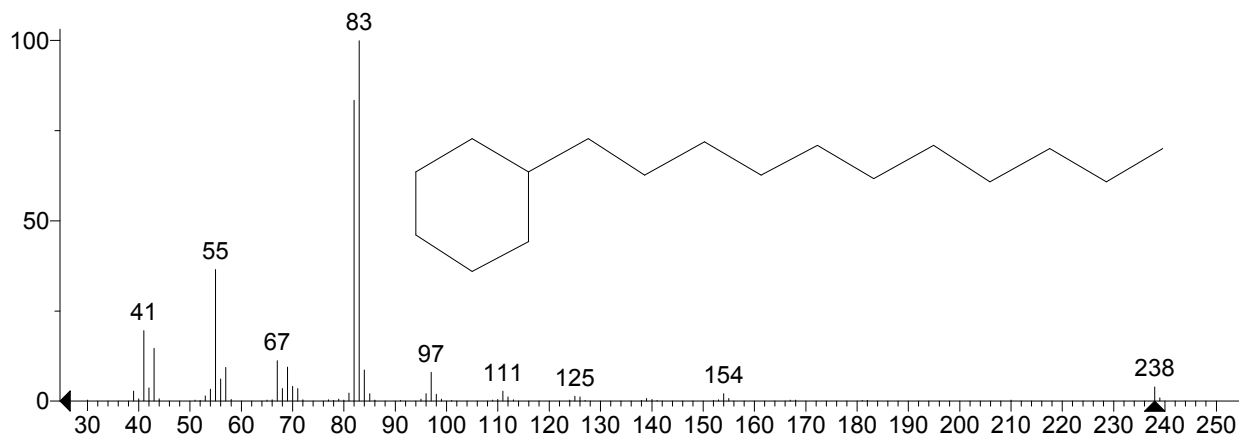
Unknown: Scan 3558 (14.717 min): 01GS078-3+2.D\data.ms
Compound in Library Factor = -224



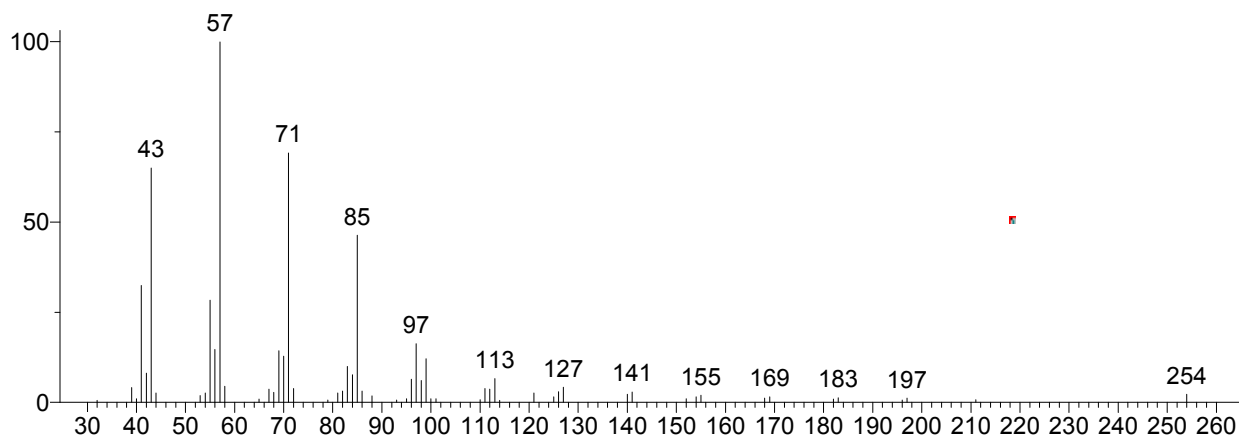
Hit 1 : Cyclohexane, undecyl-
C17H34; MF: 868; RMF: 898; Prob 31.3%; CAS: 54105-66-7; Lib: replib; ID: 10427.



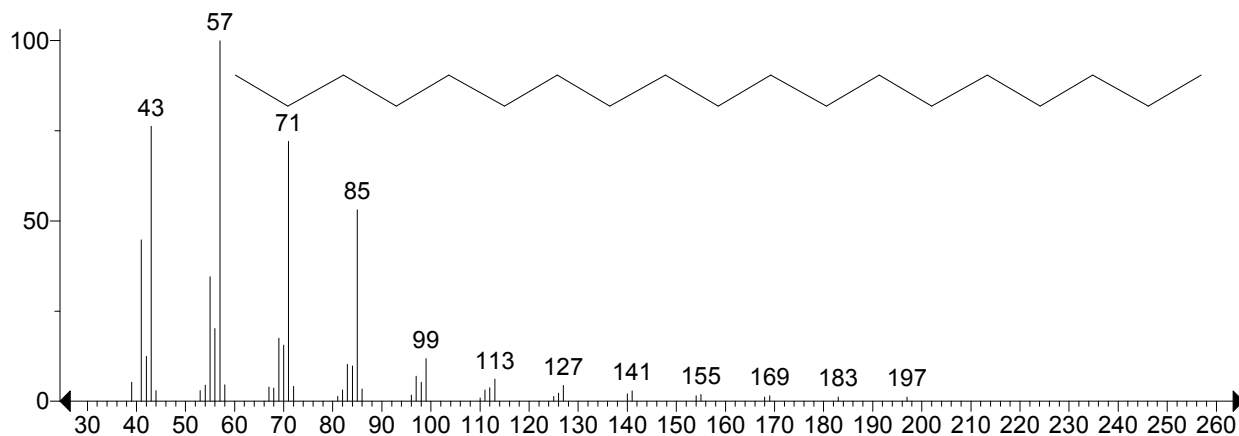
Hit 2 : Cyclohexane, undecyl-
C17H34; MF: 864; RMF: 886; Prob 31.3%; CAS: 54105-66-7; Lib: mainlib; ID: 39517.



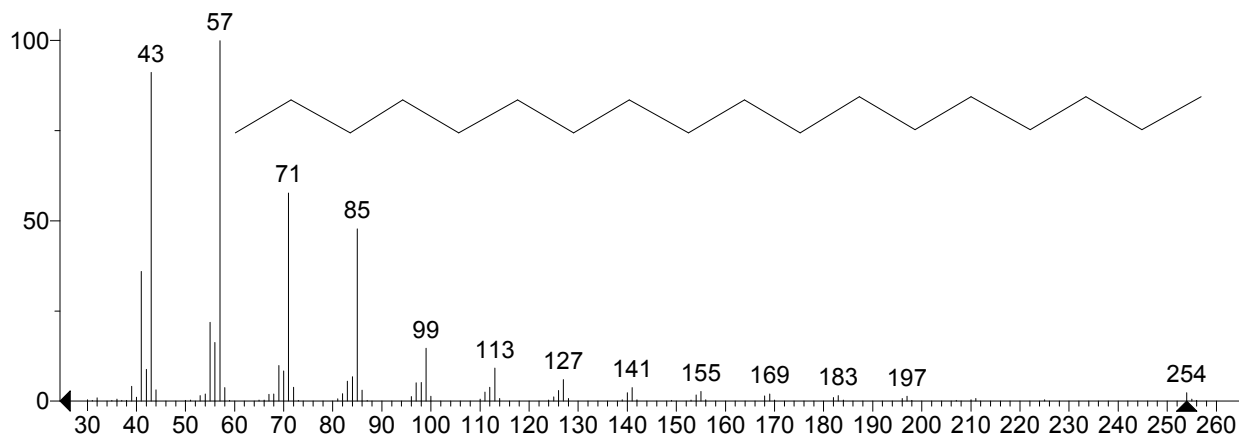
Unknown: Scan 3674 (15.096 min): 01GS078-3+2.D\data.ms
Compound in Library Factor = -124



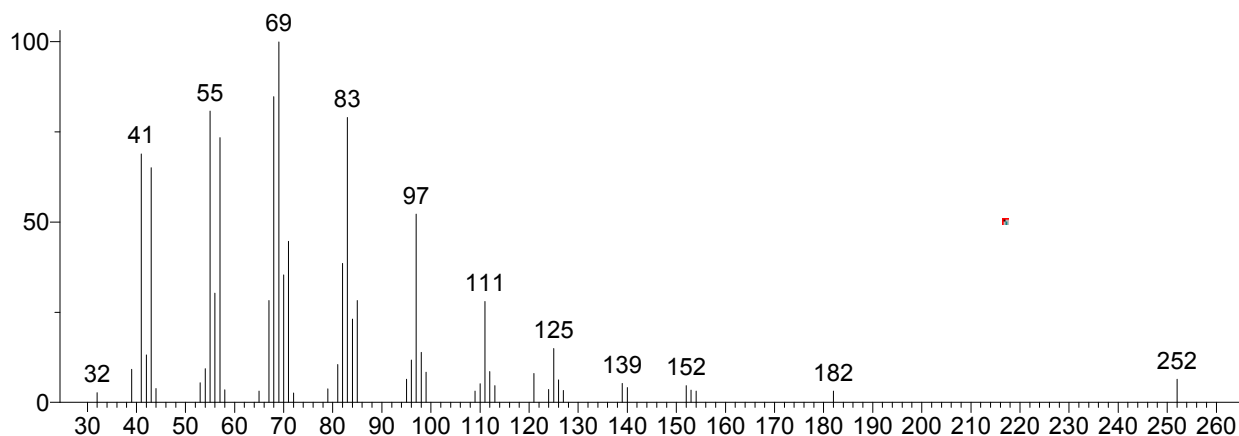
Hit 1 : Nonadecane
C₁₉H₄₀; MF: 916; RMF: 946; Prob 17.6%; CAS: 629-92-5; Lib: replib; ID: 5572.



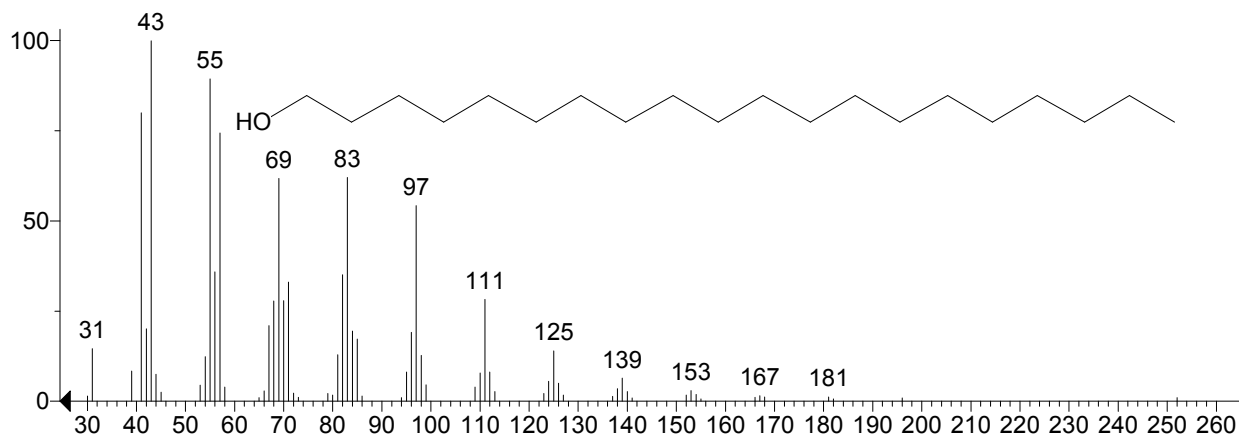
Hit 2 : Octadecane
C₁₈H₃₈; MF: 914; RMF: 927; Prob 16.3%; CAS: 593-45-3; Lib: replib; ID: 5528.



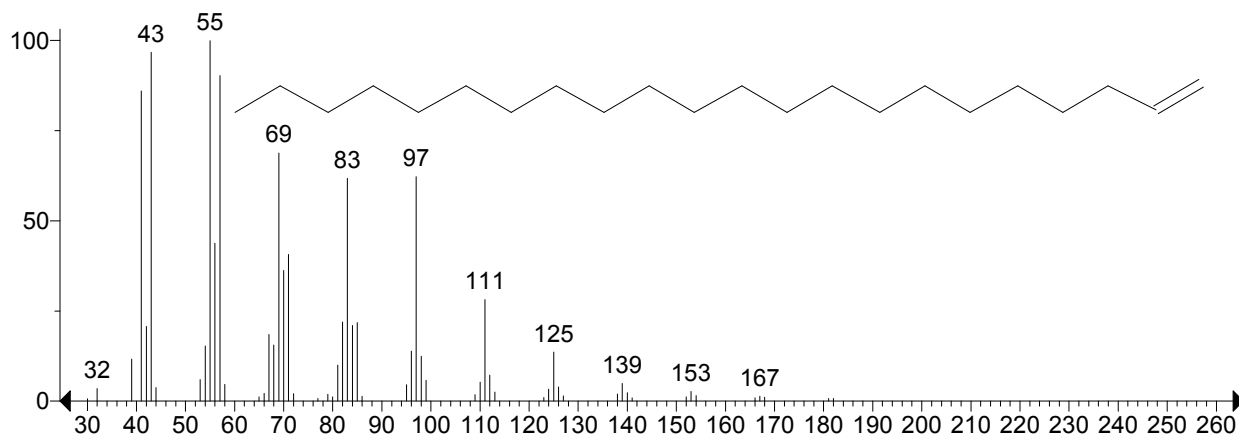
Unknown: Scan 3879 (15.766 min): 01GS078-3+2.D\data.ms
Compound in Library Factor = -297



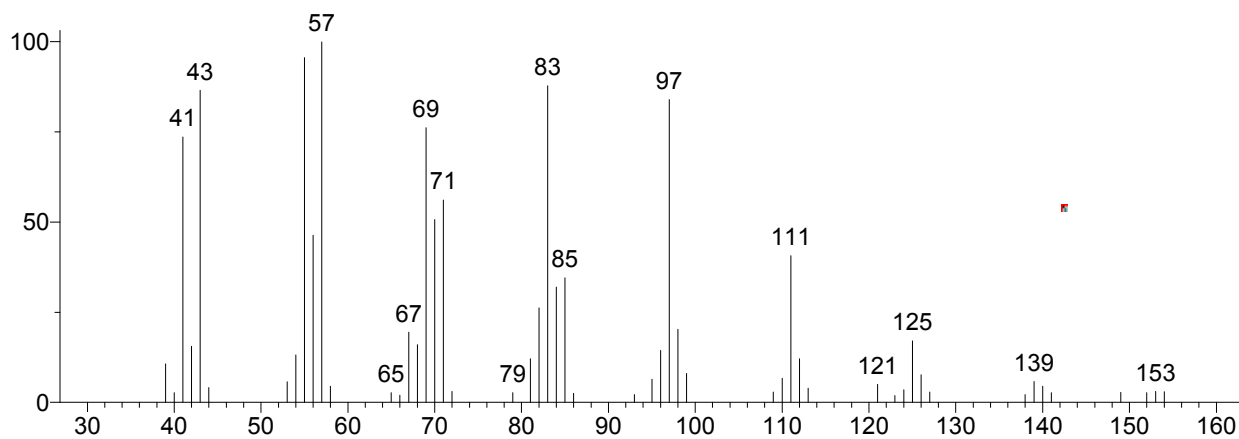
Hit 1 : 1-Eicosanol
C₂₀H₄₂O; MF: 873; RMF: 880; Prob 4.08%; CAS: 629-96-9; Lib: replib; ID: 1958.



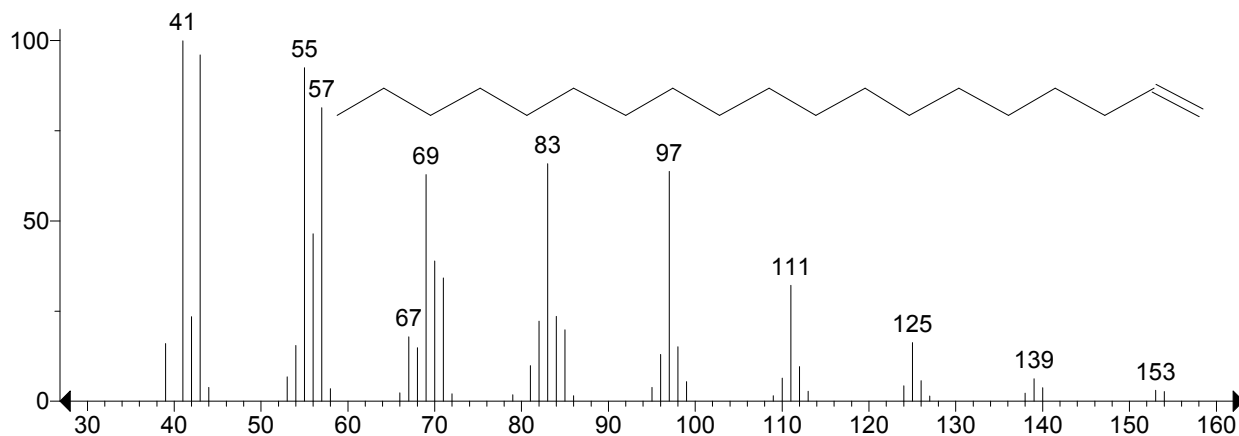
Hit 2 : 1-Docosene
C₂₂H₄₄; MF: 869; RMF: 886; Prob 3.44%; CAS: 1599-67-3; Lib: replib; ID: 4422.



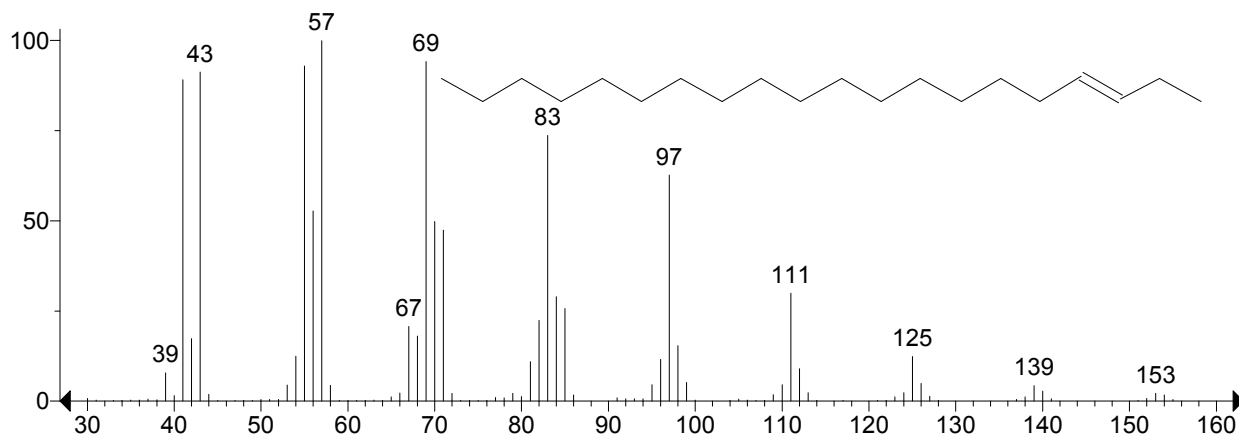
Unknown: Scan 3969 (16.060 min): 01GS078-3+2.D\data.ms
Compound in Library Factor = -161



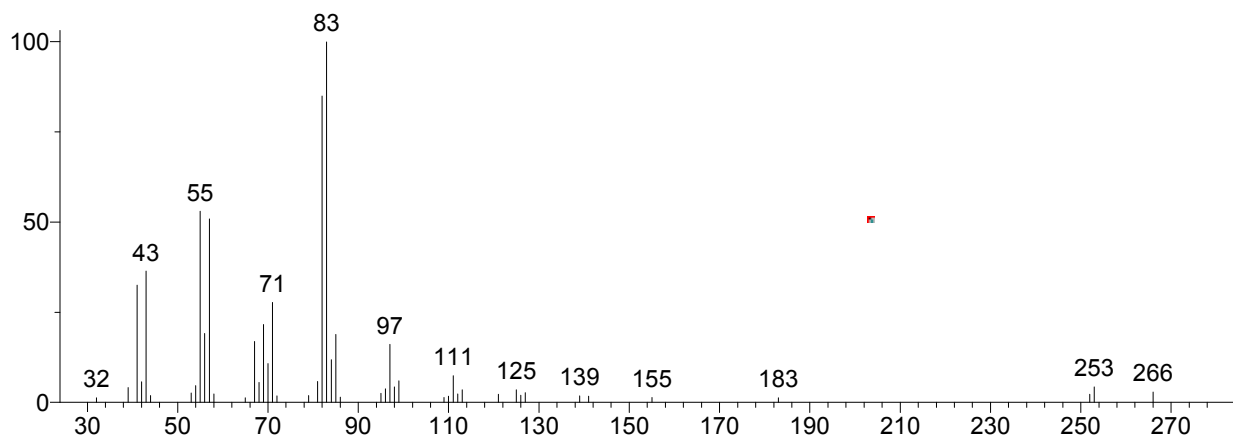
Hit 1 : 1-Nonadecene
C₁₉H₃₈; MF: 928; RMF: 943; Prob 7.18%; CAS: 18435-45-5; Lib: replib; ID: 812.



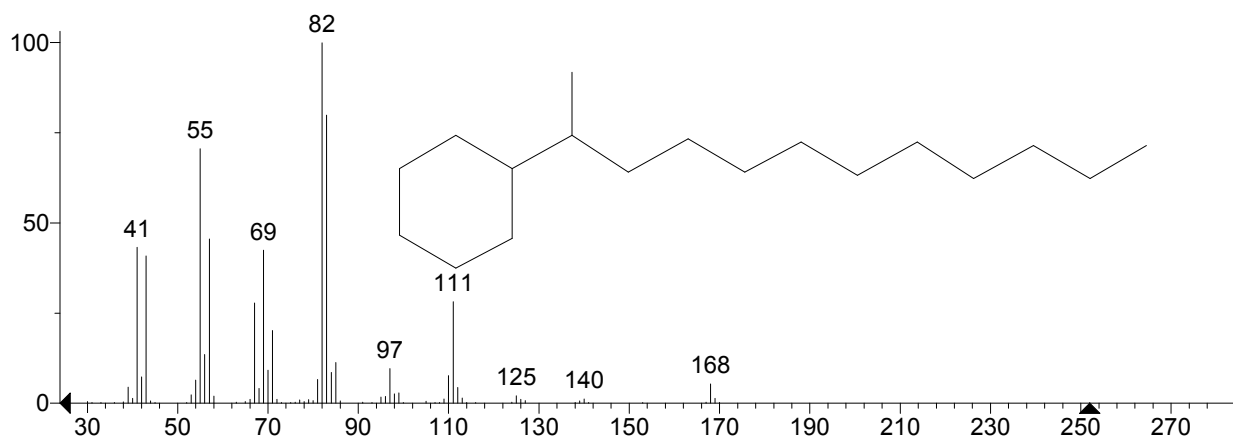
Hit 2 : 3-Eicosene, (E)-
C₂₀H₄₀; MF: 922; RMF: 929; Prob 5.65%; CAS: 74685-33-9; Lib: mainlib; ID: 20548.



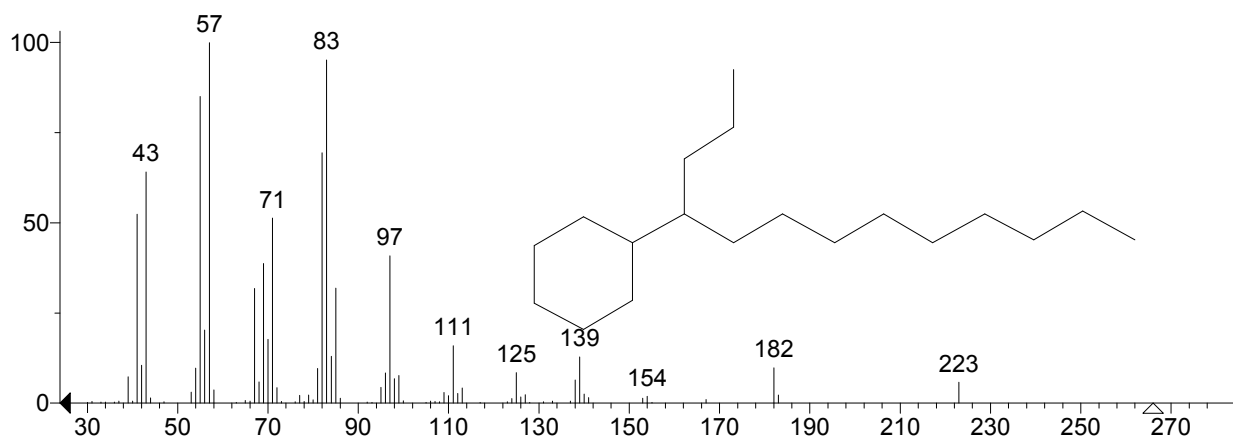
Unknown: Scan 4206 (16.835 min): 01GS078-3+2.D\data.ms
Compound in Library Factor = -359



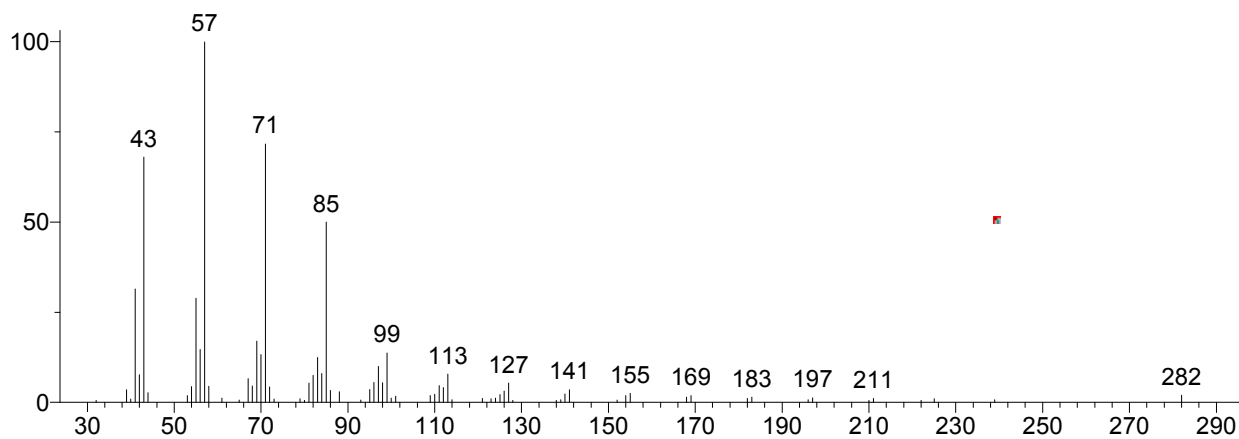
Hit 1 : Dodecane, 2-cyclohexyl-
C₁₈H₃₆; MF: 831; RMF: 863; Prob 8.51%; CAS: 13151-82-1; Lib: mainlib; ID: 38775.



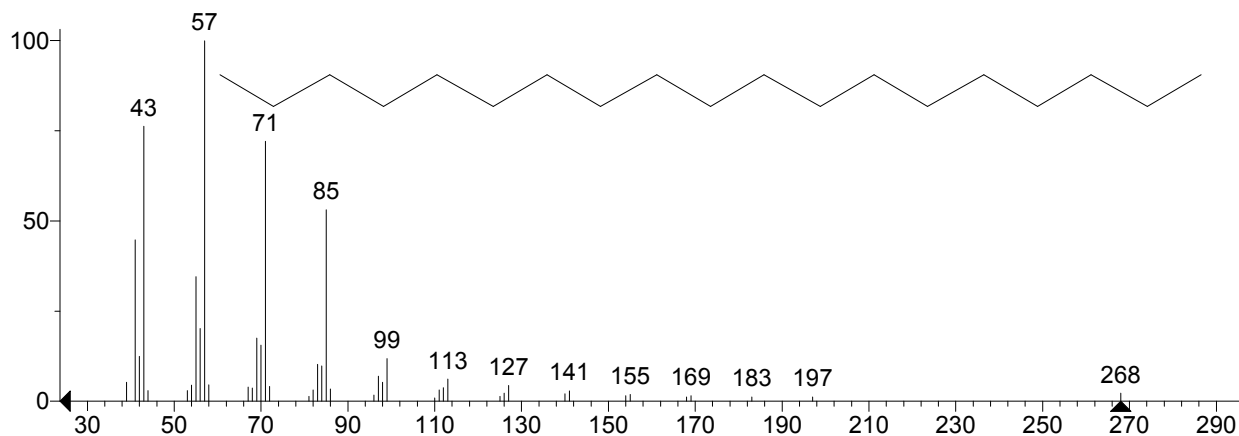
Hit 2 : Tridecane, 4-cyclohexyl-
C₁₉H₃₈; MF: 821; RMF: 851; Prob 6.01%; CAS: 13151-89-8; Lib: mainlib; ID: 20882.



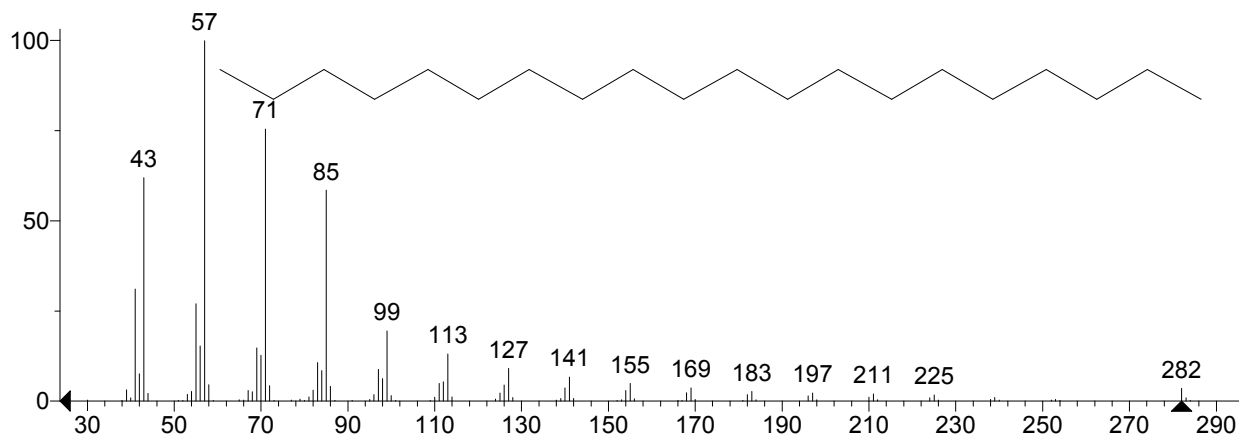
Unknown: Scan 4288 (17.103 min): 01GS078-3+2.D\data.ms
Compound in Library Factor = -253



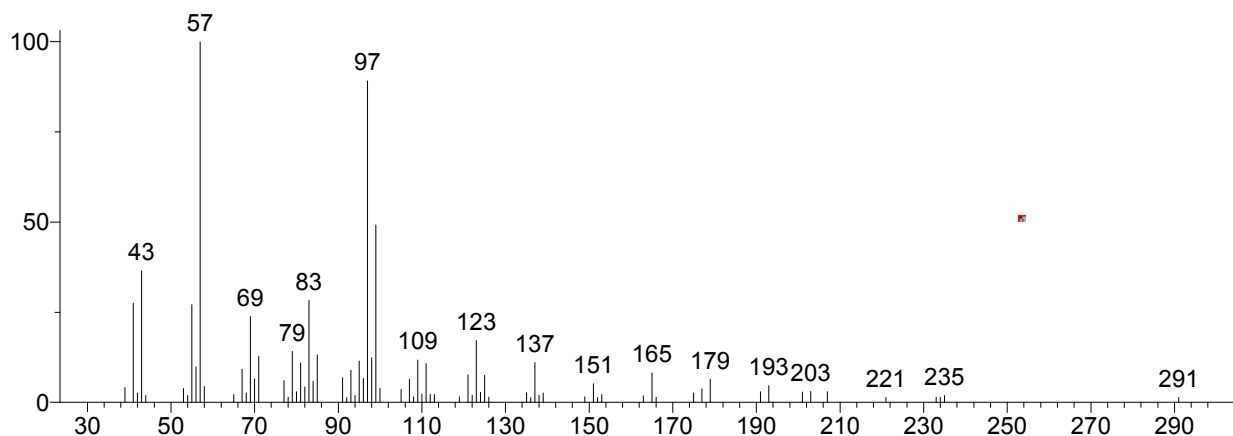
Hit 1 : Nonadecane
C₁₉H₄₀; MF: 886; RMF: 937; Prob 12.8%; CAS: 629-92-5; Lib: replib; ID: 5572.



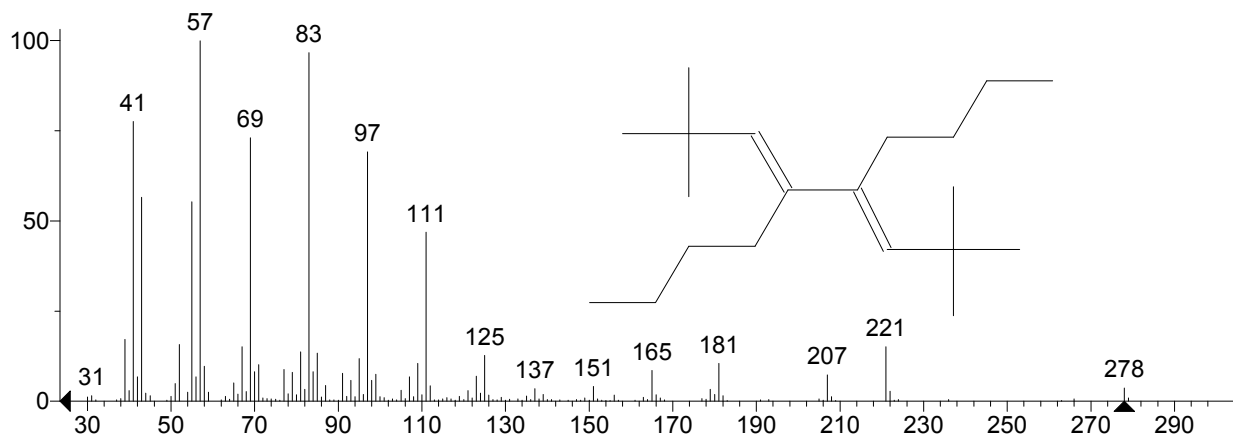
Hit 2 : Eicosane
C₂₀H₄₂; MF: 879; RMF: 888; Prob 9.82%; CAS: 112-95-8; Lib: replib; ID: 5787.



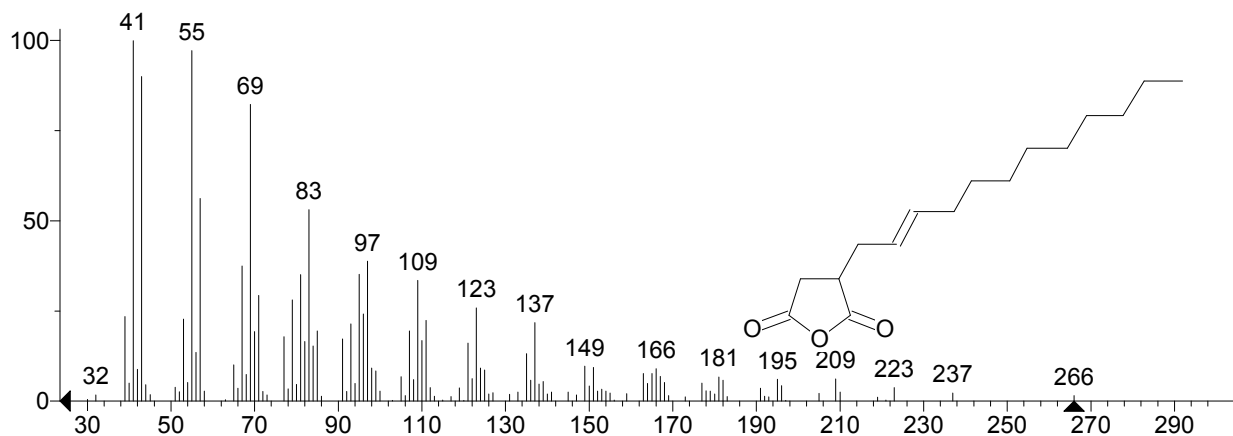
Unknown: Scan 4389 (17.433 min): 01GS078-3+2.D\data.ms
Compound in Library Factor = -898



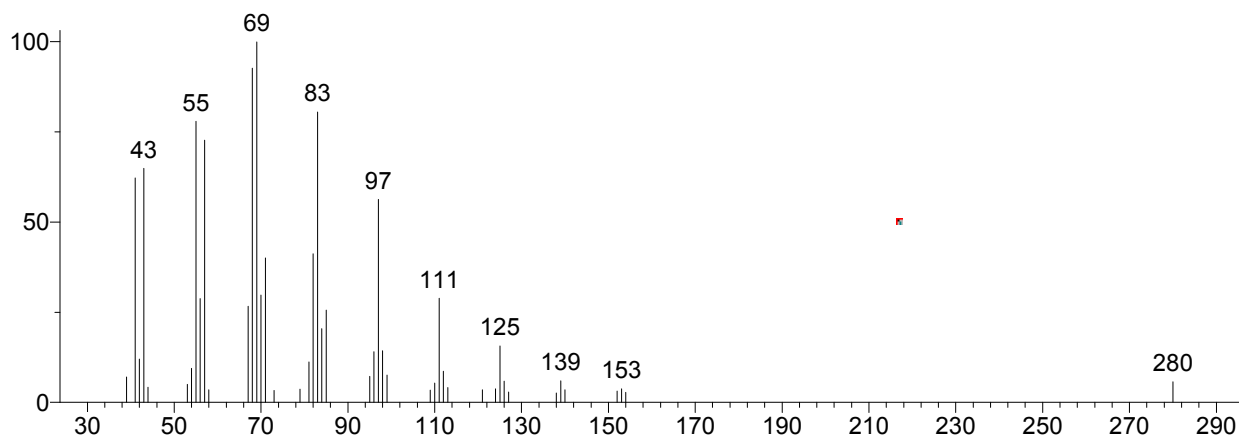
Hit 1 : Decane, 5,6-bis(2,2-dimethylpropylidene)-, (E,Z)-
C₂₀H₃₈; MF: 719; RMF: 741; Prob 14.9%; CAS: 55712-56-6; Lib: mainlib; ID: 20869.



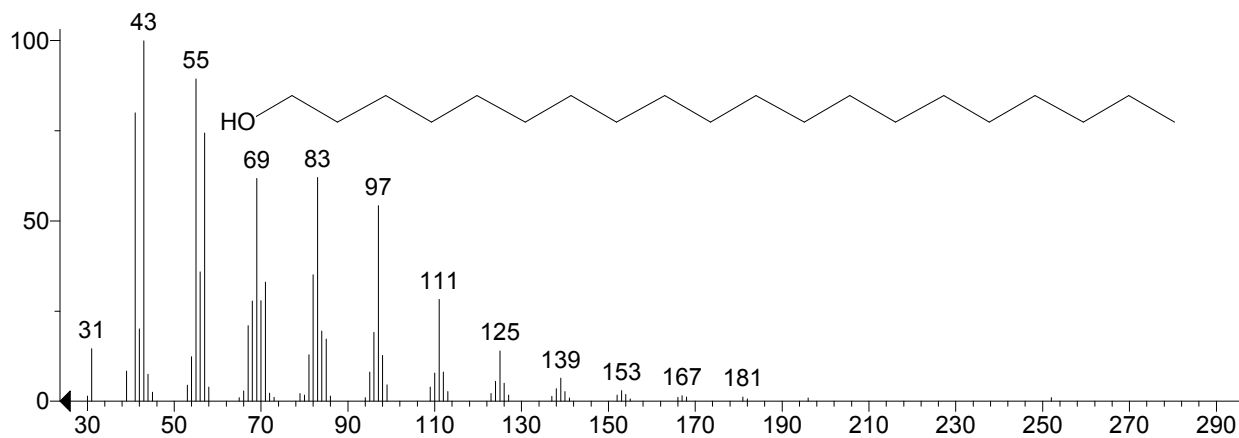
Hit 2 : 2-Dodecen-1-yl(-)succinic anhydride
C₁₆H₂₆O₃; MF: 714; RMF: 738; Prob 12.0%; CAS: 19780-11-1; Lib: mainlib; ID: 2320.



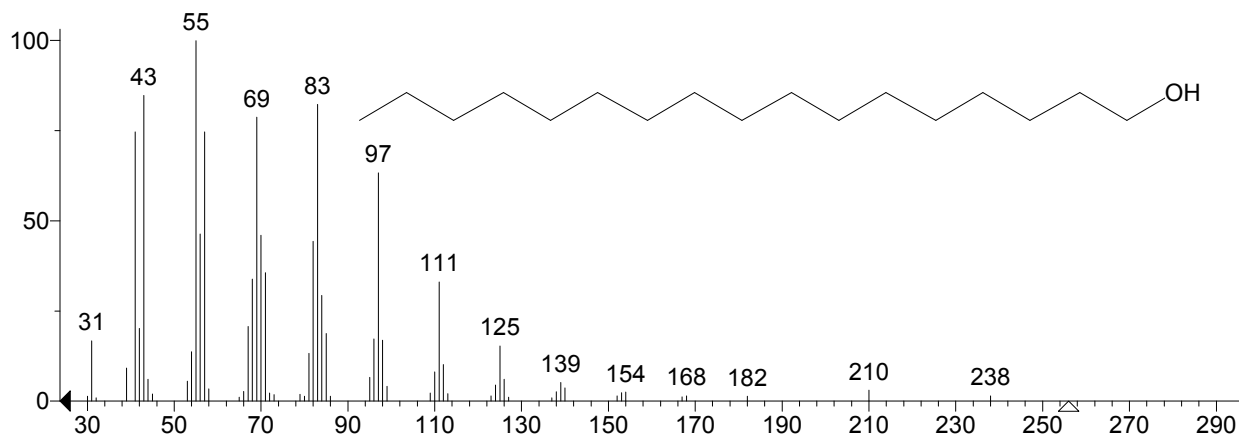
Unknown: Scan 4493 (17.773 min): 01GS078-3+2.D\data.ms
Compound in Library Factor = -253



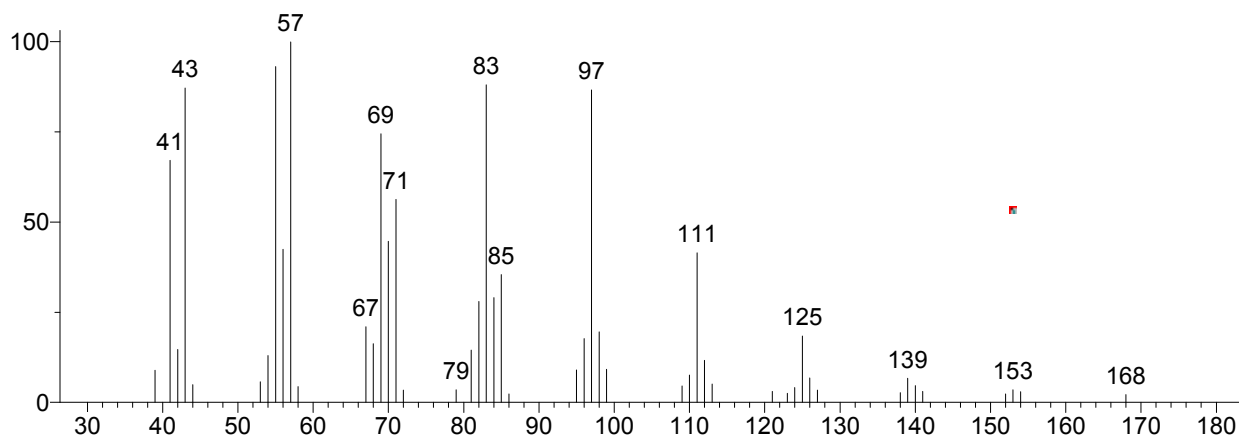
Hit 1 : 1-Eicosanol
C₂₀H₄₂O; MF: 885; RMF: 899; Prob 6.34%; CAS: 629-96-9; Lib: replib; ID: 1958.



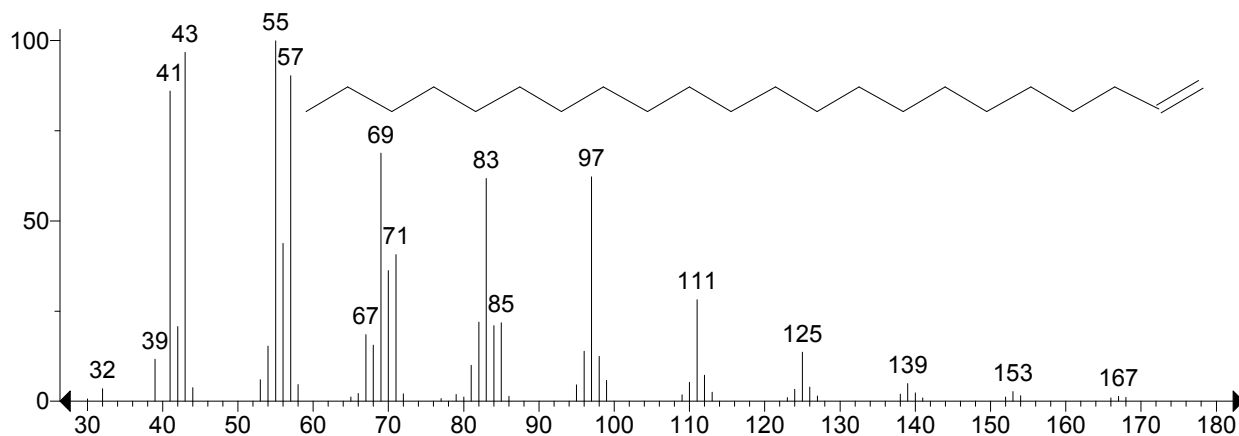
Hit 2 : 1-Heptadecanol
C₁₇H₃₆O; MF: 880; RMF: 893; Prob 5.11%; CAS: 1454-85-9; Lib: replib; ID: 4433.



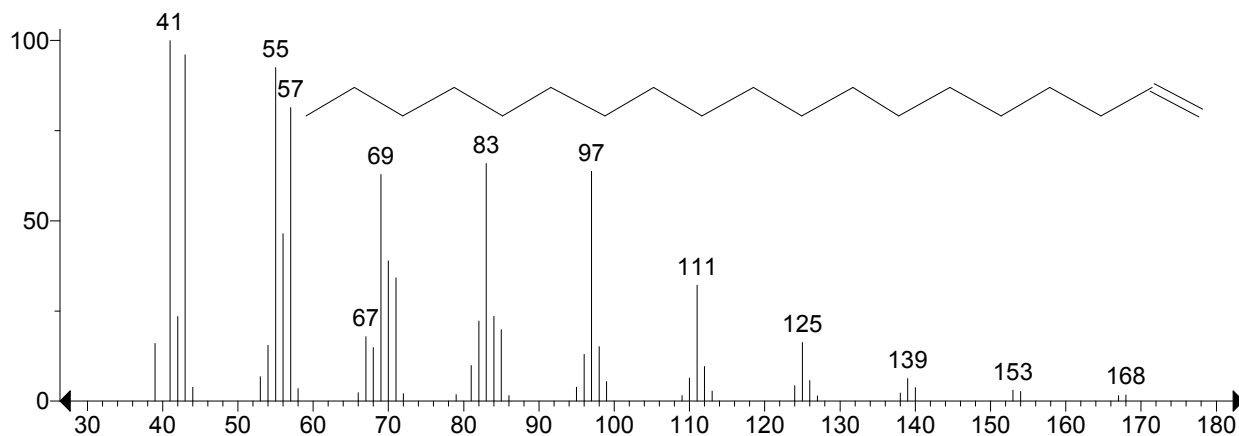
Unknown: Scan 4558 (17.985 min): 01GS078-3+2.D\data.ms
Compound in Library Factor = -161



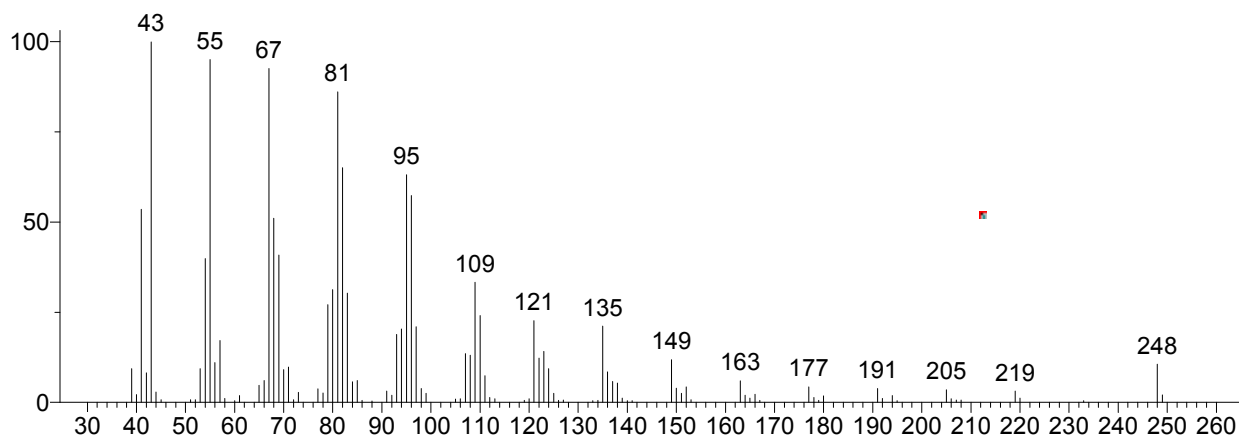
Hit 1 : 1-Docosene
C₂₂H₄₄; MF: 924; RMF: 927; Prob 6.74%; CAS: 1599-67-3; Lib: replib; ID: 4422.



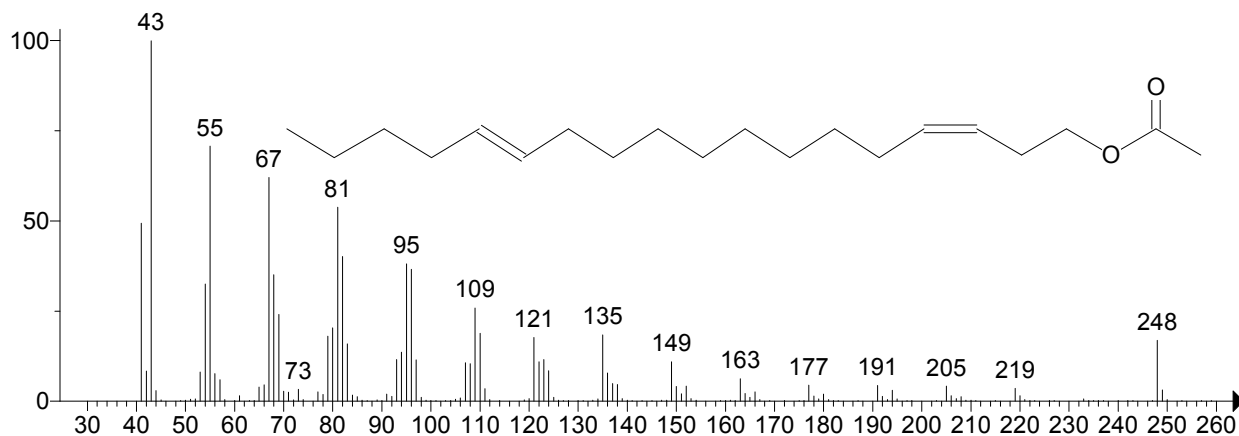
Hit 2 : 1-Nonadecene
C₁₉H₃₈; MF: 923; RMF: 932; Prob 6.48%; CAS: 18435-45-5; Lib: replib; ID: 812.



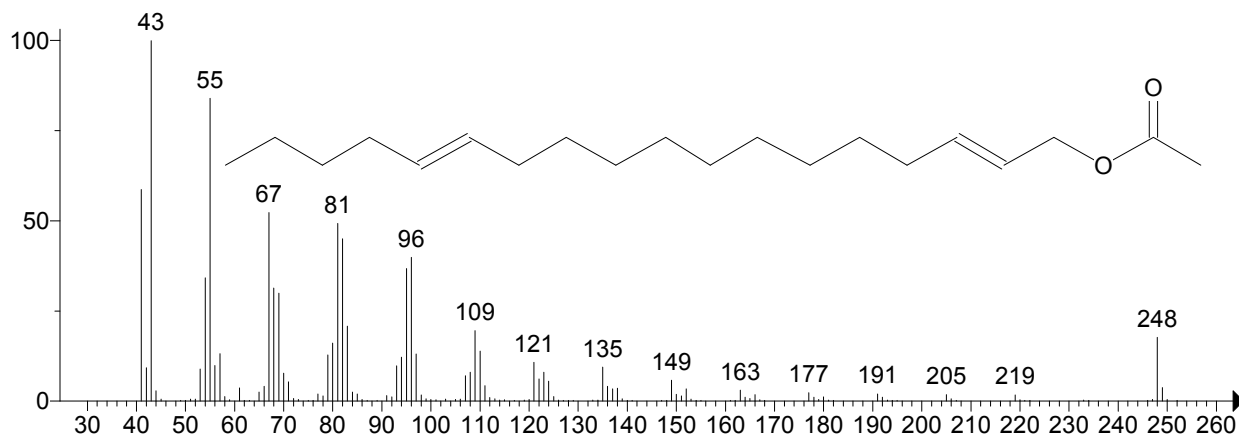
Unknown: Scan 4782 (18.717 min): 01GS078-3+2.D\data.ms
Compound in Library Factor = -117



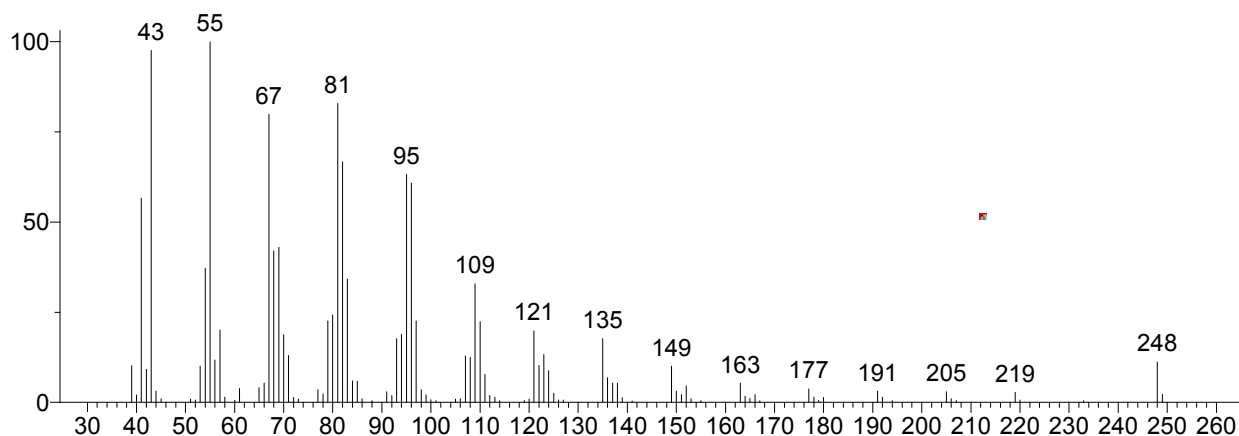
Hit 1 : Z,E-3,13-Octadecadien-1-ol acetate
C₂₀H₃₆O₂; MF: 928; RMF: 929; Prob 18.3%; Lib: mainlib; ID: 6298.



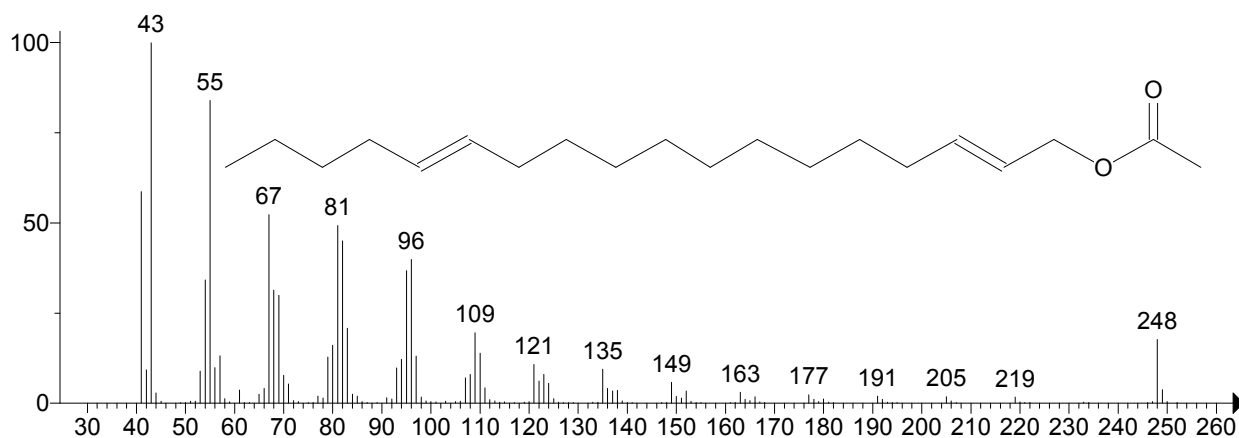
Hit 2 : E,E-2,13-Octadecadien-1-ol acetate
C₂₀H₃₆O₂; MF: 921; RMF: 922; Prob 14.0%; Lib: mainlib; ID: 6087.



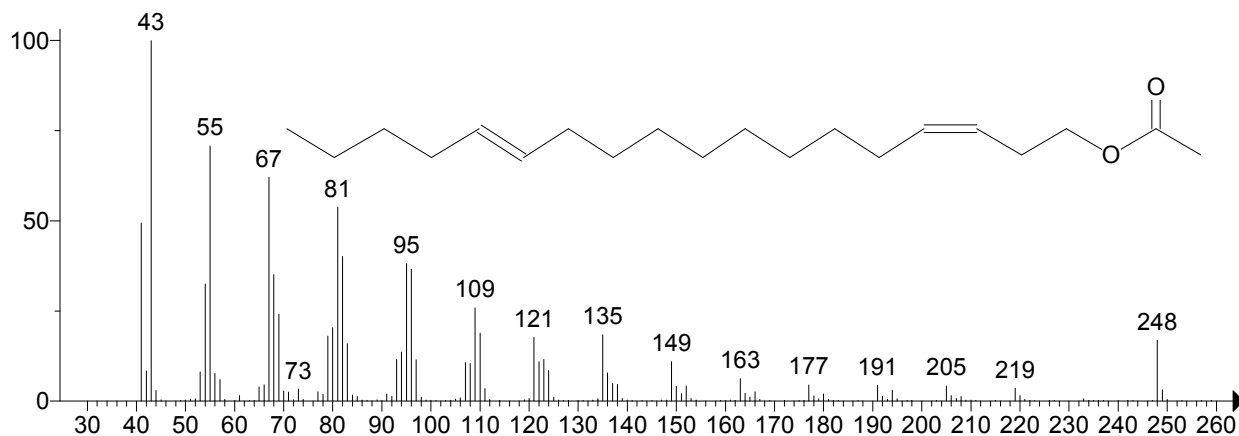
Unknown: Scan 4791 (18.747 min): 01GS078-3+2.D\data.ms
Compound in Library Factor = -103



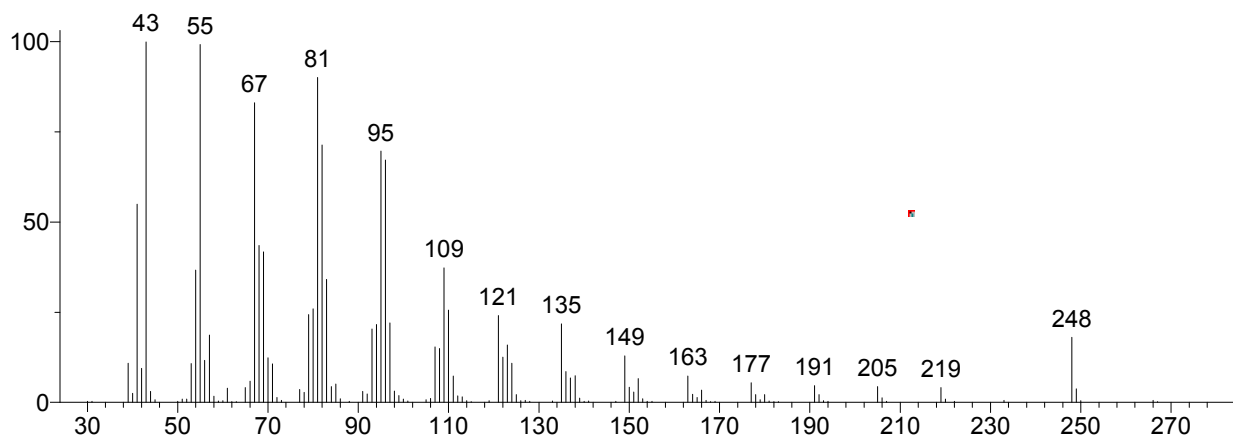
Hit 1 : E,E-2,13-Octadecadien-1-ol acetate
C₂₀H₃₆O₂; MF: 940; RMF: 941; Prob 34.8%; Lib: mainlib; ID: 6087.



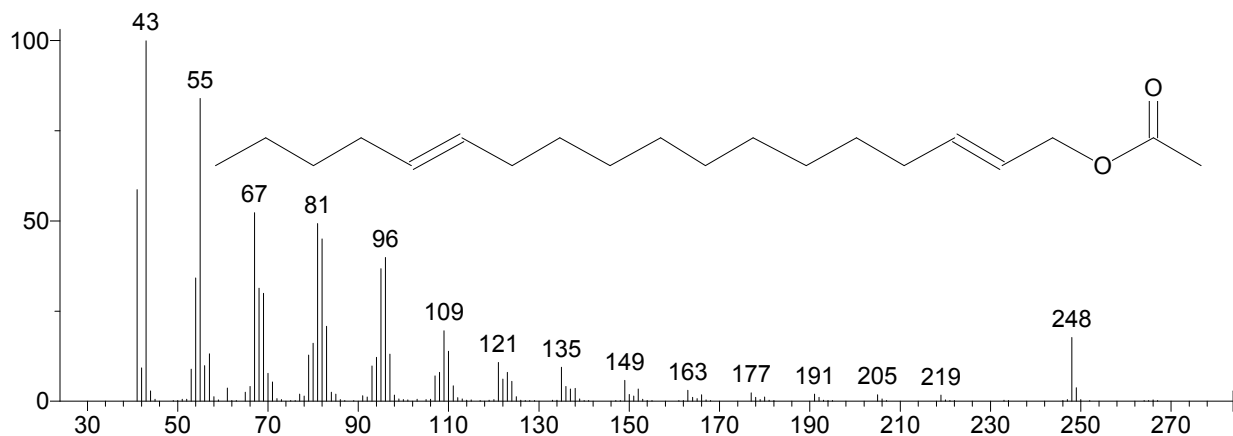
Hit 2 : Z,E-3,13-Octadecadien-1-ol acetate
C₂₀H₃₆O₂; MF: 912; RMF: 914; Prob 10.1%; Lib: mainlib; ID: 6298.



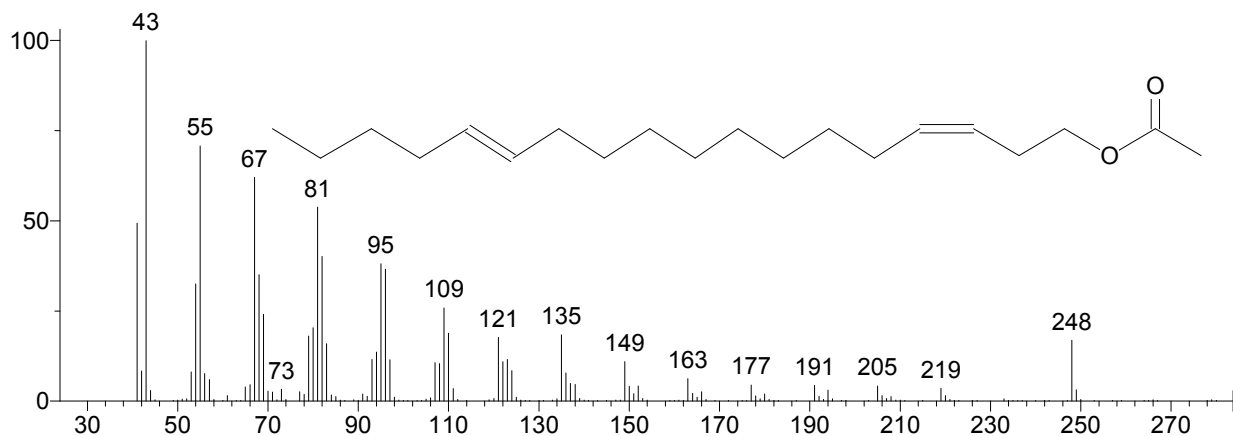
Unknown: Scan 4822 (18.848 min): 01GS078-3+2.D\data.ms
Compound in Library Factor = 116



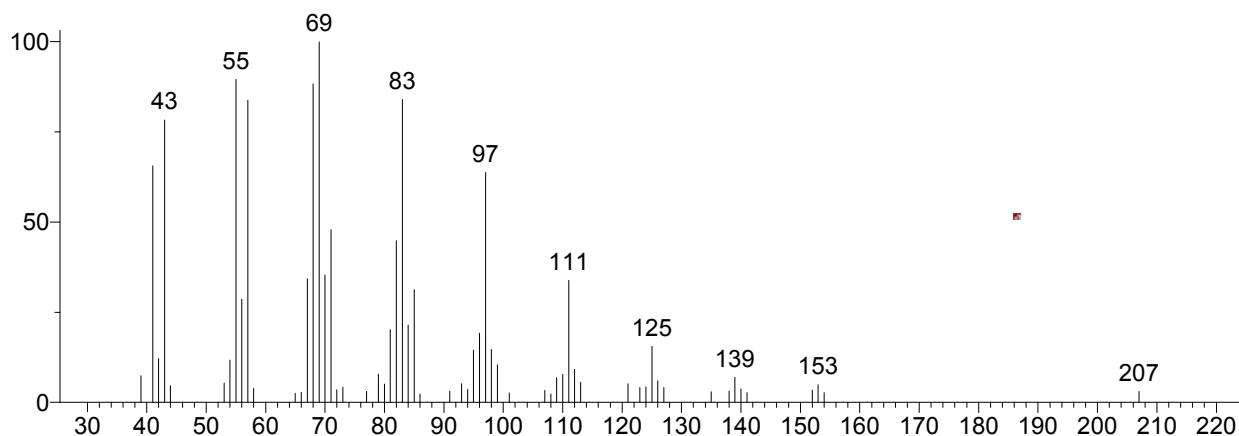
Hit 1 : E,E-2,13-Octadecadien-1-ol acetate
C₂₀H₃₆O₂; MF: 947; RMF: 947; Prob 49.4%; Lib: mainlib; ID: 6087.



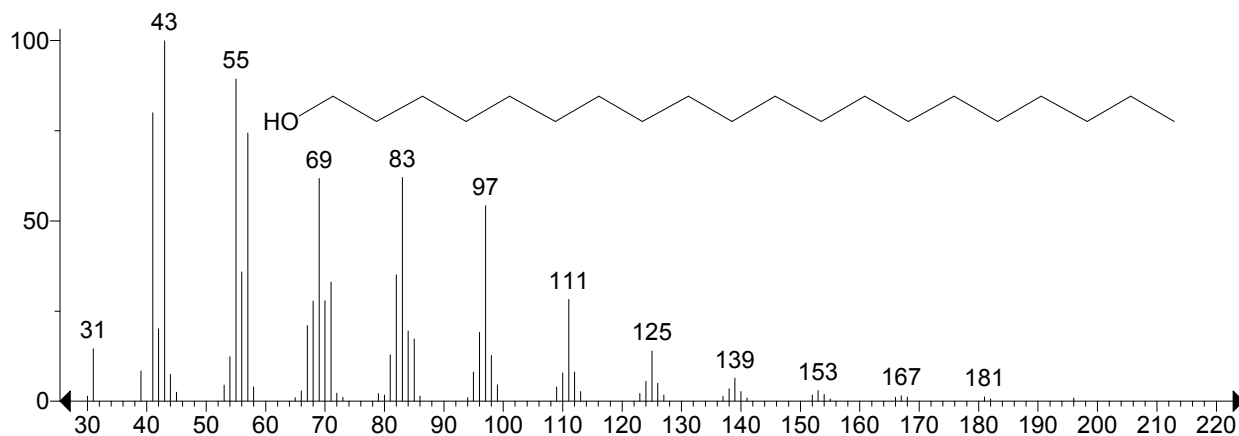
Hit 2 : Z,E-3,13-Octadecadien-1-ol acetate
C₂₀H₃₆O₂; MF: 912; RMF: 914; Prob 12.4%; Lib: mainlib; ID: 6298.



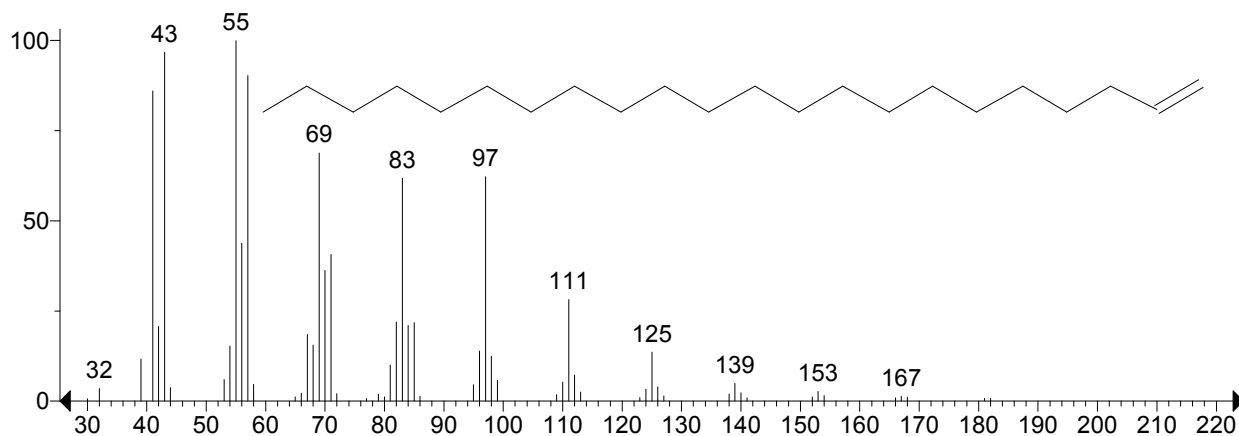
Unknown: Scan 4950 (19.267 min): 01GS078-3+2.D\data.ms
Compound in Library Factor = -297



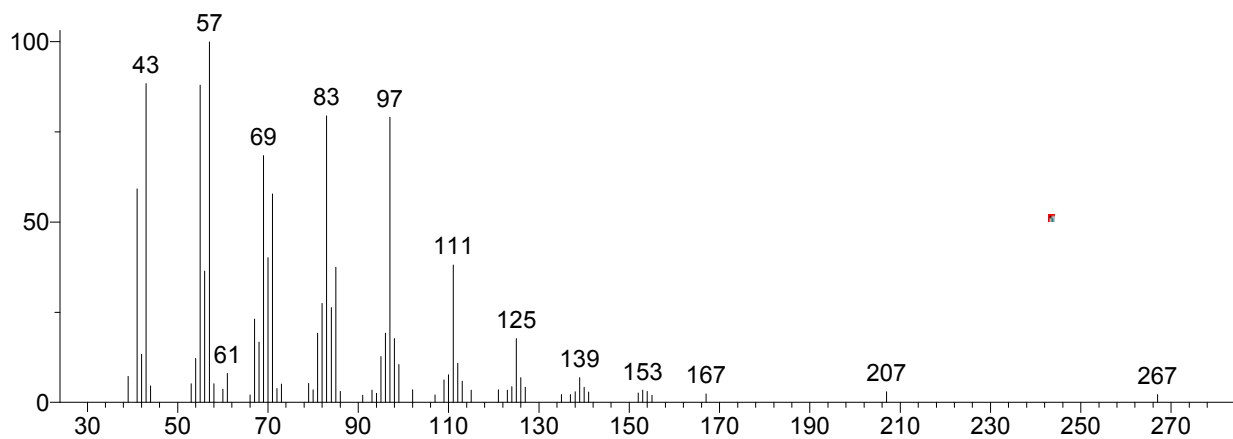
Hit 1 : 1-Eicosanol
C₂₀H₄₂O; MF: 873; RMF: 892; Prob 8.03%; CAS: 629-96-9; Lib: replib; ID: 1958.



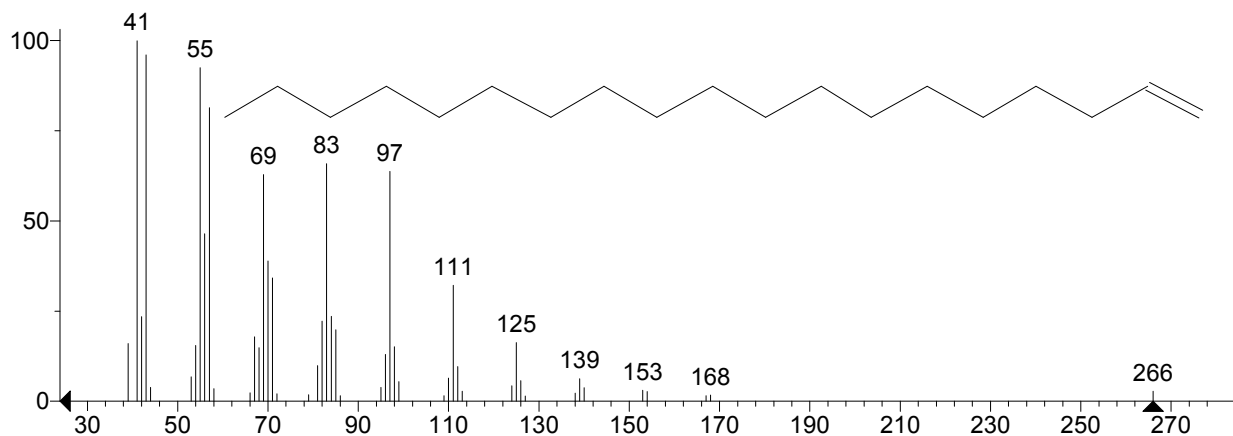
Hit 2 : 1-Docosene
C₂₂H₄₄; MF: 864; RMF: 886; Prob 5.83%; CAS: 1599-67-3; Lib: replib; ID: 4422.



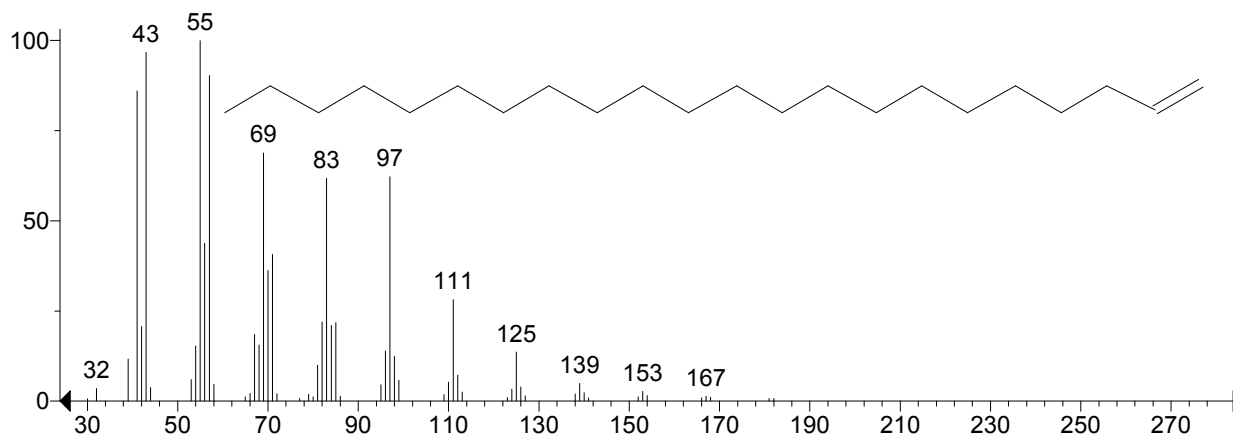
Unknown: Scan 4977 (19.355 min): 01GS078-3+2.D\data.ms
Compound in Library Factor = -253



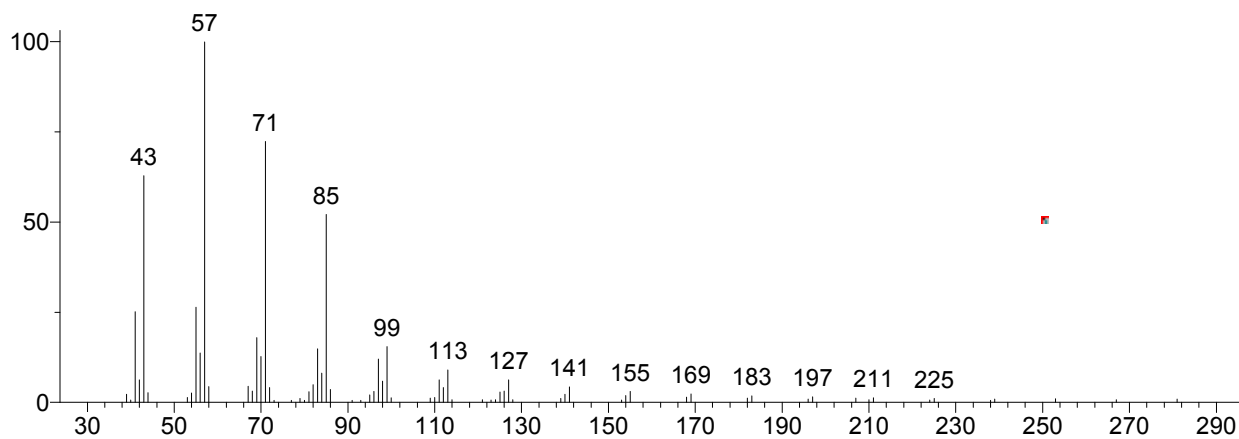
Hit 1 : 1-Nonadecene
C19H38; MF: 885; RMF: 926; Prob 6.14%; CAS: 18435-45-5; Lib: replib; ID: 812.



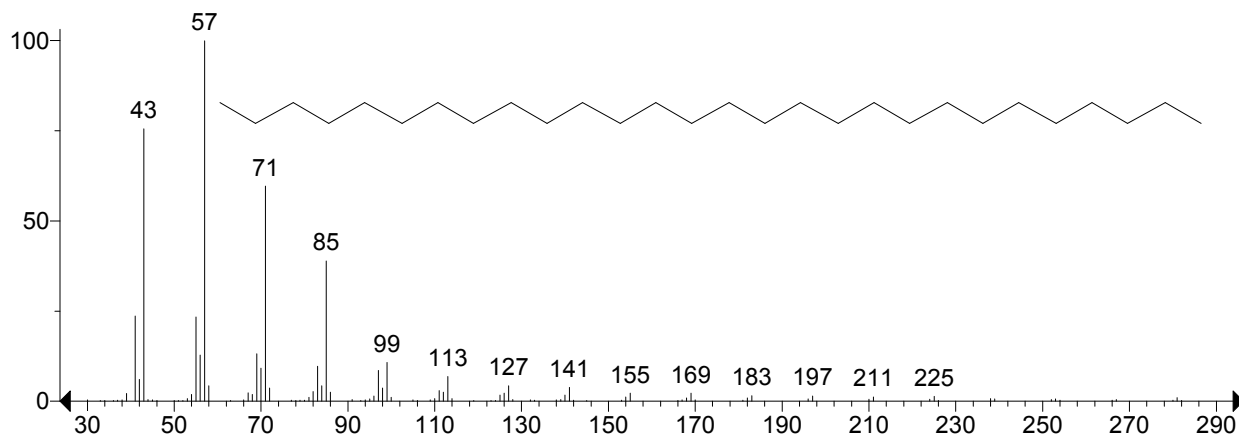
Hit 2 : 1-Docosene
C22H44; MF: 885; RMF: 916; Prob 6.14%; CAS: 1599-67-3; Lib: replib; ID: 4422.



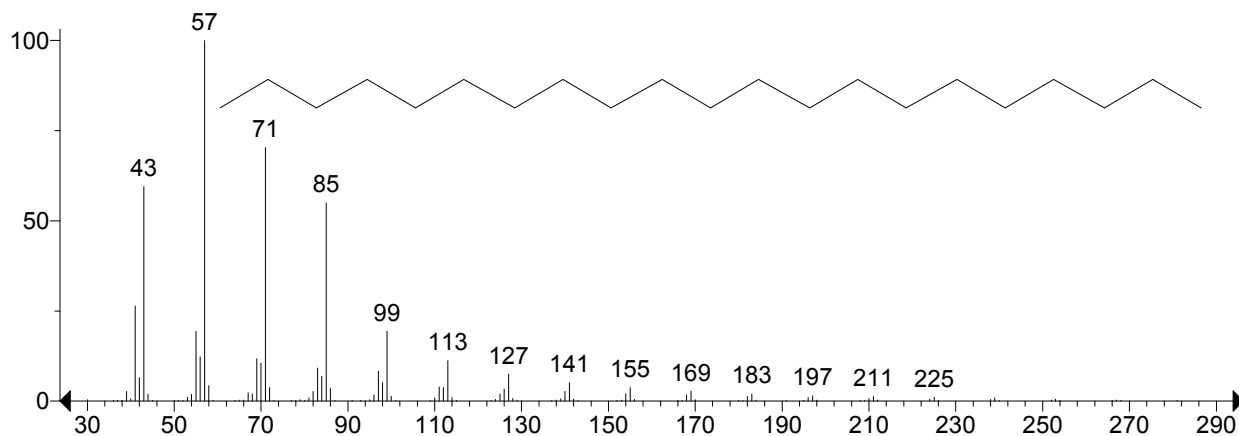
Unknown: Scan 5148 (19.914 min): 01GS078-3+2.D\data.ms
Compound in Library Factor = -134



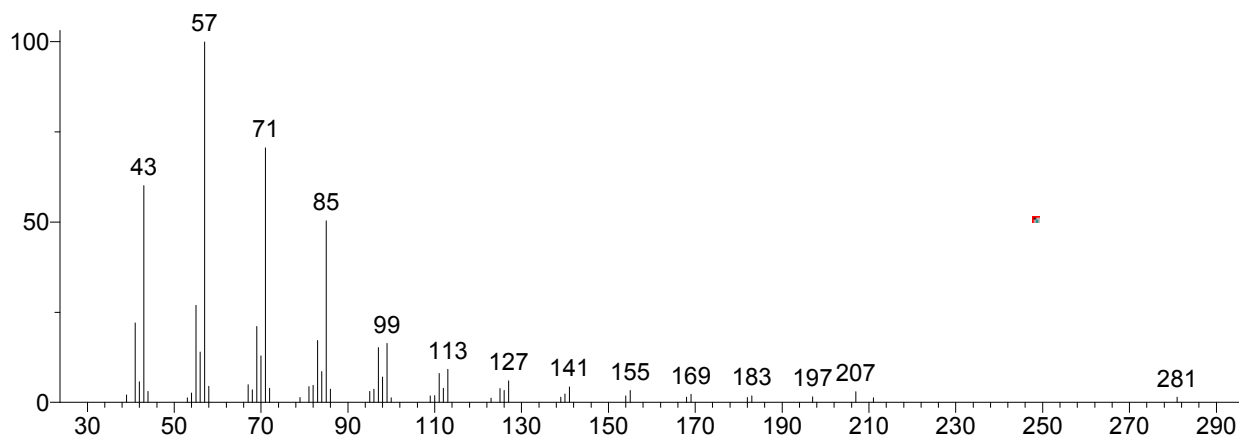
Hit 1 : Octacosane
C₂₈H₅₈; MF: 905; RMF: 912; Prob 9.97%; CAS: 630-02-4; Lib: replib; ID: 5505.



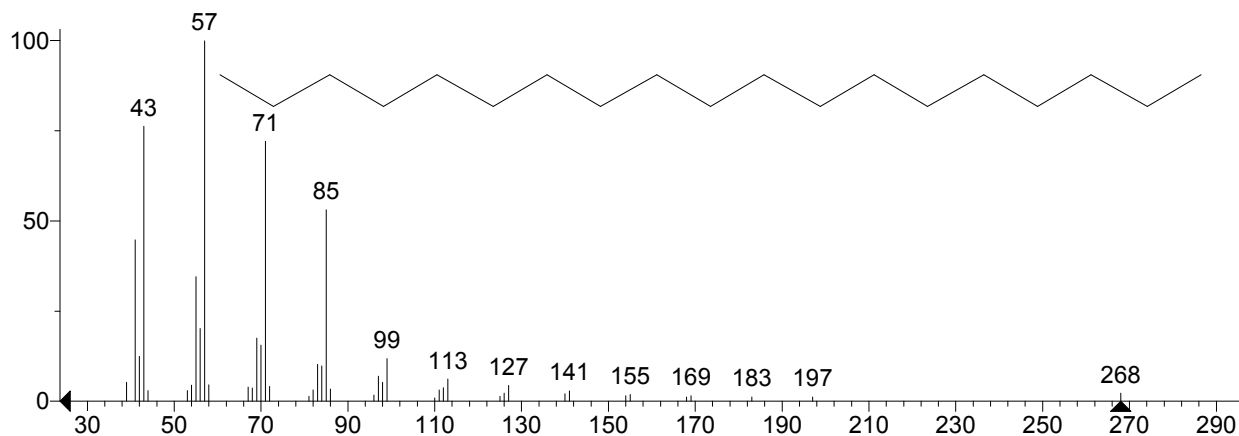
Hit 2 : Heneicosane
C₂₁H₄₄; MF: 904; RMF: 913; Prob 9.58%; CAS: 629-94-7; Lib: replib; ID: 5804.



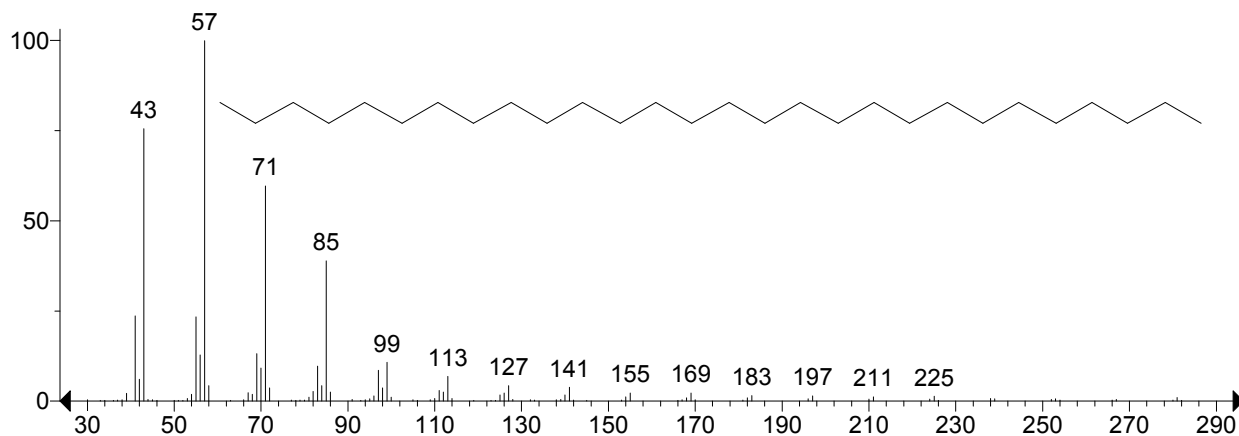
Unknown: Scan 6045 (22.846 min): 01GS078-3+2.D\data.ms
Compound in Library Factor = -253



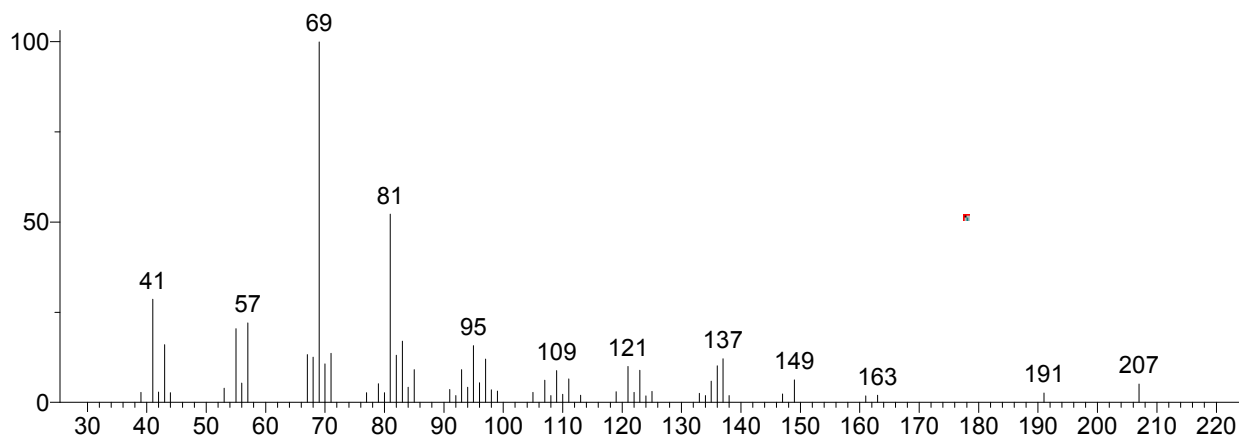
Hit 1 : Nonadecane
C19H40; MF: 883; RMF: 915; Prob 11.3%; CAS: 629-92-5; Lib: replib; ID: 5572.



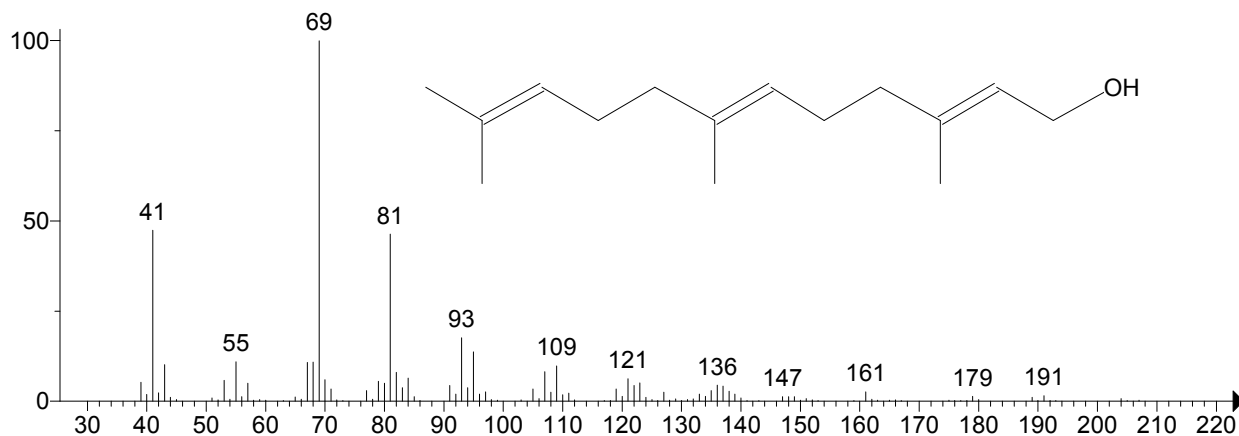
Hit 2 : Octacosane
C28H58; MF: 874; RMF: 883; Prob 8.22%; CAS: 630-02-4; Lib: replib; ID: 5505.



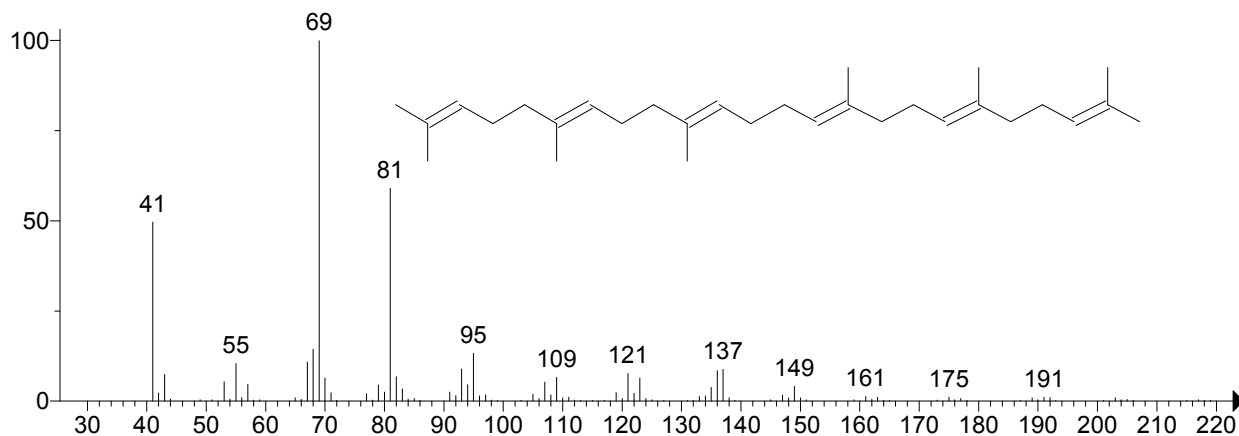
Unknown: Scan 6165 (23.238 min): 01GS078-3+2.D\data.ms
Compound in Library Factor = -520



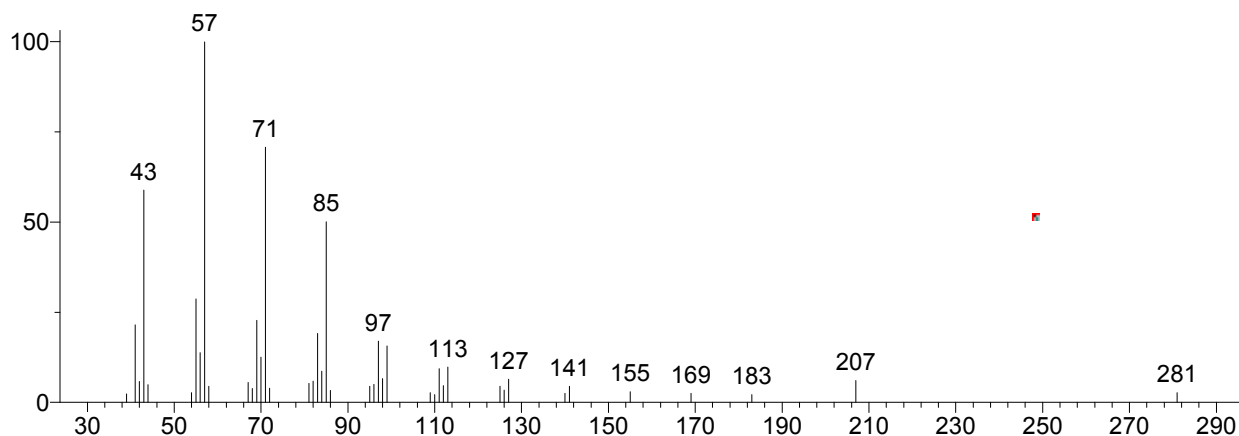
Hit 1 : Farnesol isomer a
C₁₅H₂₆O; MF: 790; RMF: 792; Prob 12.8%; Lib: mainlib; ID: 26886.



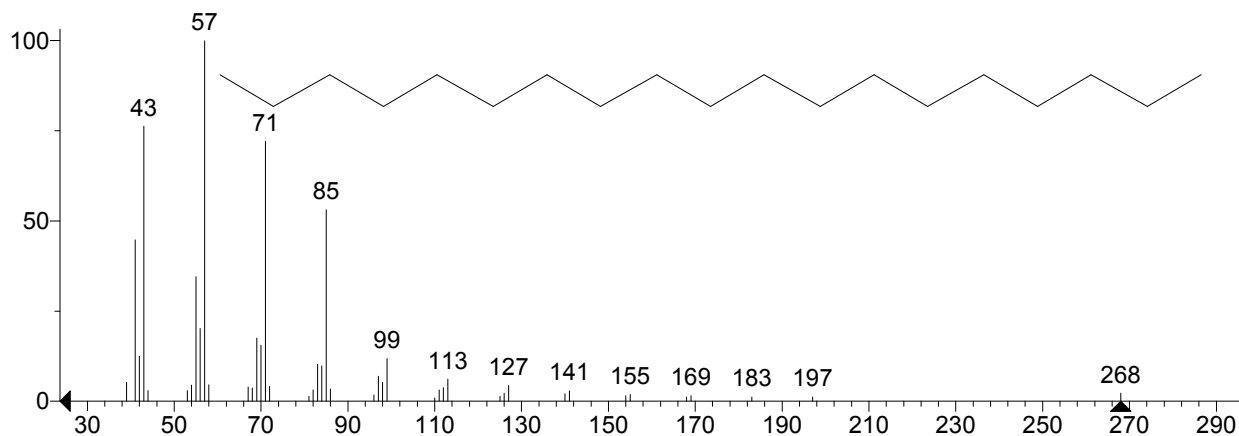
Hit 2 : Squalene
C₃₀H₅₀; MF: 786; RMF: 797; Prob 10.8%; CAS: 7683-64-9; Lib: replib; ID: 7813.



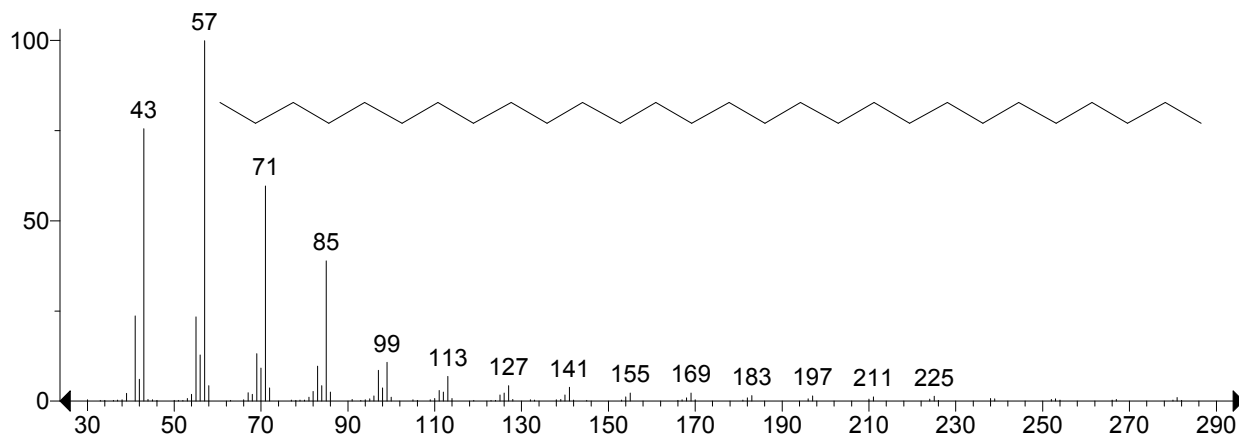
Unknown: Scan 6820 (25.379 min): 01GS078-3+2.D\data.ms
Compound in Library Factor = -283



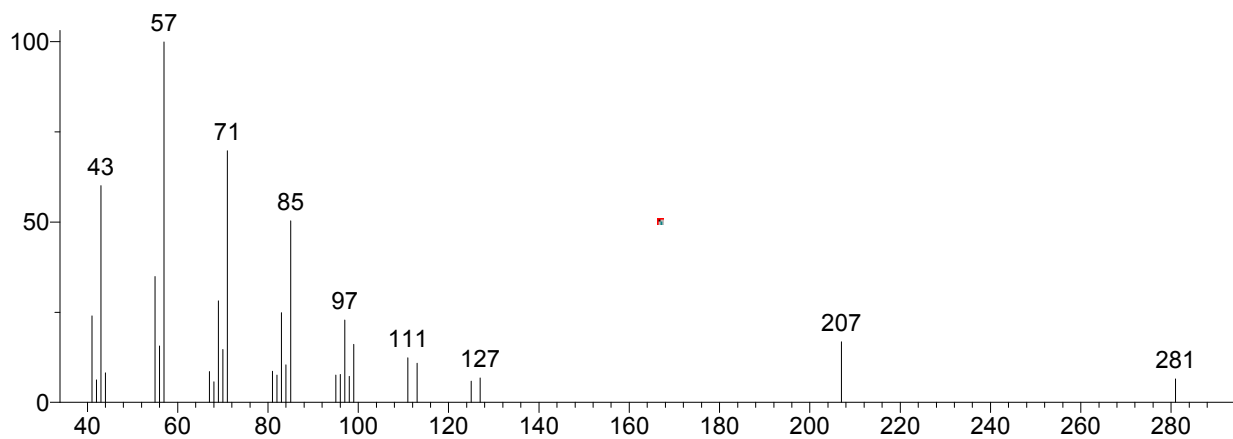
Hit 1 : Nonadecane
C₁₉H₄₀; MF: 858; RMF: 890; Prob 10.6%; CAS: 629-92-5; Lib: replib; ID: 5572.



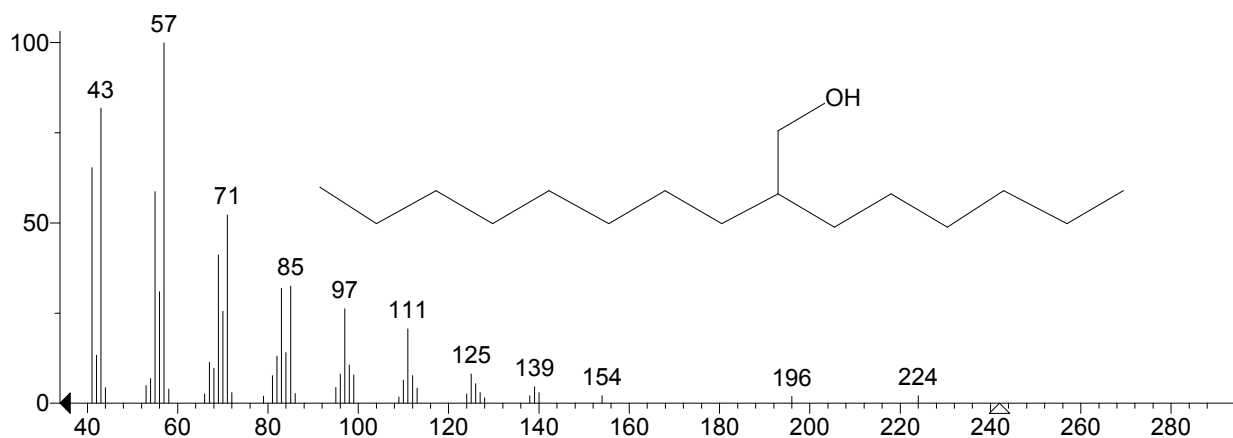
Hit 2 : Octacosane
C₂₈H₅₈; MF: 842; RMF: 857; Prob 6.11%; CAS: 630-02-4; Lib: replib; ID: 5505.



Unknown: Scan 8028 (29.327 min): 01GS078-3+2.D\data.ms
Compound in Library Factor = -1067



Hit 1 : 1-Decanol, 2-hexyl-
C₁₆H₃₄O; MF: 760; RMF: 818; Prob 6.03%; CAS: 2425-77-6; Lib: replib; ID: 5449.



Hit 2 : Nonadecane
C₁₉H₄₀; MF: 756; RMF: 820; Prob 5.09%; CAS: 629-92-5; Lib: replib; ID: 5572.

